

**LANDSCAPE AS METAPHOR: THE INTERPRETATION OF SELECTED
PAINTINGS BY (AMY) BERTHA EVERARD**

VOLUME 2: ILLUSTRATIONS

Louisa Eriksen-Miller

Submitted in partial fulfilment of the requirements for the degree of Master of Arts
University of Natal, Pietermaritzburg
January 2002

ILLUSTRATIONS AND INDEX OF PAINTINGS

This index of paintings is provided to assist the reader and does not claim to be a *catalogue raisonné* of Bertha Everard's work. It includes illustrations of work by other artists relevant to this research. The black and white photocopied illustrations have been taken from Harmsen (1980) and Addleson (2000). The colour photographs are those taken by this researcher or from copies of those owned by Leonora Everard Haden. Colour copies of the paintings are used where available, although the colours are not always accurate.

The chronology of this index of illustrations is largely based on Harmsen's research (1980). Five periods have been established namely: Early English period (pre-1902), Early South African period (1902-1922), Later English period (c 1924), French period (c 1925/6) and Late South African period (1926-1965).

A star (*) indicates the paintings that do not appear in Harmsen's index (1980). Where the dates of these new paintings are uncertain, they have been added at the end of what is assumed to be the appropriate period. The illustrations and relevant information regarding these (*) works were obtained from the index cards belonging to the Everard Haden.

Not all Bertha's paintings illustrated are discussed in this research. Many of Bertha's paintings owned by the family are in storage (some canvases were damaged during storage at Bonnefoi) and have still to be documented, whilst others have not been traced.

In the text boxes information is provided as follows: the artist's name, title of work, medium, size, signature if indicated, current whereabouts/ collection. If an exhibition helps to date the work it will be indicated. A list of abbreviations is provided on page 5.

Early English period (pre-1902)

1. Water lily pond (1895)
2. Bridge in a forest (1895)
3. Spring trees (21.3.1895)
4. Unfinished portrait of a lady (nd)
5. Cottages in Cornwall (nd)
6. Fishing boats, St Ives (nd)
7. Cornish girl (nd)
8. River scene (nd)
9. Landscape with trees and cottages
10. Sunflowers and nasturtiums (nd)
11. Kentish poppyfield (nd)
12. Children picking flowers (nd)
13. Farmyard (nd)
14. Dune landscape (nd)
15. Study of ducks (c 1901)

16. Sketch of Edith King (nd)
17. Edith King picking flowers (1900) (TAG)
18. *Clyde Villa, Shortham, Seven Oaks, Kent (c 1896-1900)
19. *Marsh landscape (c 1901)
20. *Sea rocks (nd)
21. *English landscape with cows (nd)
22. *English landscape with dirt road (nd)
23. *Men planting cabbages (nd)
24. *River delta (nd)
25. *Wild Flowers, England (nd)
26. *English scene with cottage and girl playing in water (nd)
27. *Trees, England (nd)
28. *Orchard (nd)

Early South African period (1902-1922)

29. Dirt road near Pretoria (nd)
30. Tented camp, Pretoria (nd)
31. A country store (nd)
32. The Bonnefoi store (nd)
33. Figure in a landscape (nd)
34. Miniature of Edith King (nd)
35. Miniature of Ruth Everard (nd)
36. Unfinished portrait of Edith King and Ruth Everard (nd)
37. Peace of Winter (1909/10) (JAG)
38. Photograph of site of Peace of Winter (1977)
39. *Mid-Winter on the Komati (1910)
40. *Starry night (c 1910)
41. Masimini vale (c 1909-13)
42. The Krantz (nd)
43. A street in Carolina (nd)
44. Asbestos hills (nd) (c1911)
45. Bonnefoi picnic (nd)
46. Moonrise (nd) (c1924?)
47. Pale hillside (nd) (c1924)
48. Banner for Eunice School (1915)
49. Winter in the lowveld (nd) (1916)
50. The willows (nd) (c 1916?)
51. Morning tree (nd) (c 1916)
52. Banks of the Komati (early photograph)
53. Banks of the Komati (?)
54. Spring, Eastern Transvaal (nd)
55. Winter grass, Transvaal (tondo) (nd) (c 1917?)
56. Banks of the Komati (tondo) (nd)
57. Wag 'n bietjies or The three witches (nd)
58. Moon and shadow (nd)
59. The Bonnefoi herd of angora goats (nd) (c 1916/17?)
60. Twantwani (nd)

61. Charlie's rocks, Skurweberg (nd)
62. Tree on Skurweberg (nd)
63. Portrait sketch of Ruth (nd)
64. *View of gum trees from Bonnefoi (c 1902?)
65. Rock and thunderheads, Skurweberg (nd)
66. Green hills (nd)
67. Baboon valley (nd) (1915-1920)
68. Land of Luthany (nd) (c 1917?)
69. The twin towered church, Bloemfontein (c1919)
70. Looking towards Swaziland (nd) (c 1920/21)

Later English period (1922-1924/5)

71. Leyton House (nd) (c 1924)
72. Rubber factory, Harpenden (nd) (c 1924)
73. Cornfields, Kimpton (nd) (c 1924)
74. Kimpton signpost (nd) (c 1924)
75. Haycover (nd) (c 1924)
76. *Harpenden (c 1925)
77. *English landscape with trees (nd) (c 1924)
78. *English landscape with trees (c 1924)
79. *Foxgloves in forest (nd) (c 1923/24)
80. *Road through trees (nd) (c 1924)
81. *Trees, England (nd)

French Period 1925/26

82. Chantilly woods (nd) (1925)
83. Dancing tree (nd) (1925)
84. Chantilly Woods (c 1925)
85. House at Bruneval (nd) (c1925)
86. (Bruneval) Road to the sea (nd) (c 1925)
87. Cliffs at Bruneval (nd) (c 1925)
88. *Cliff at Bruneval (nd) (c 1925)
89. *Cliff with path, Bruneval (nd) (c 1925)
90. *Road to Bruneval (nd) (c 1925)
91. Wheatfields, Normandy (nd) (c 1925) or Wheatfields with a blue sky
92. Ploughed land, Normandy (nd) (c 1925)
93. Paysage (nd) (c 1925)
94. Longueval 1 (nd) (c 1926)
95. *Road to Longueval (c 1926)
96. Road to Flair (nd) (c 1926)
97. *House and fields (nd) (c 1926)?
98. *Road and telephone poles 2 (nd) (c 1926)?
99. *Road and telephone poles 1 (nd) (c 1926)
100. *Road, pines and crucifix (c 1925)
101. *Road through village (South of France) (c 1925)

- 102. *Chantilly Woods (c 1925)
- 103. Delville Wood, ten years later (nd) (c 1926)
- 104. Landscape with crater (nd) (c 1926)
- 105. Trees and trenches of Delville Wood (nd) (c 1926)
- 106. Shell holes, Delville Wood (nd) (c 1926)
- 107. Delville Wood (nd) (c 1926)
- 108. *Delville Wood (nd) (c 1926)
- 109. *Three tall tree trunks, Delville Wood (nd) (c 1926)
- 110. *Monument and cemetery, Delville Wood (1926)

Late South African period (1926-1965)

- 111. Bend in the river, Lekkerdraai (nd)
- 112. The new furrow (nd) (c 1936?) (c 1928)
- 113. Hills, Eastern Transvaal (nd) (c 1931?)
- 114. Small furrow (nd)
- 115. Lekkerdraai 1 or Evening in the Komati valley (nd) (c1935)
- 116. Dawn on Komati (nd) (c 1937)
- 117. Lekkerdraai 2 (nd)
- 118. Four young trees (nd)
- 119. *Road to river or dam, Transvaal landscape (nd)
- 120. *Landscape with tree (nd)
- 121. *Tree in ploughed land, Boschoek or Lekkerdraai (1936)
- 122. *Yellow and pink hillside with clouds or Winterveld with cloud shadow at Boschoek or Lekkerdraai (nd)
- 123. *Sunlit hills and cliff (unfinished) (c 1916)
- 124. *African woman seated in kraal (nd)
- 125. *African baby in yellow grass (nd)
- 126. *Empty building in landscape (nd)
- 127. *Ploughed fields and shadows, (Kimpton?) (nd) (c1924?)

Drawings by Bertha

- 128. Drawing of Ruth by Bertha
- 129. Drawing of Edith by Bertha
- 130. Drawing of Rosamund by Bertha
- 131. Landscape drawing by Bertha

Miscellaneous

- 132. Map of Mpumalanga
- 133. Photograph of Bertha (1902)
- 134. Photograph of Charles (1902)
- 135. Photograph of Bertha (1926)
- 136. Photograph of Bertha and Sebastian

137. *Seascape in moonlight by W E Osborn (nd).
138. Edith King: Kloof trees, Riverlands (nd)
139. Ruth Everard Haden: Barbeton mountains (nd)
140. Rosamund Everard: Petra (nd)
141. Rosamund Everard: Violets (nd)
142. Allerly Glossop:
143. Leo Francois:
144. Frans Oerder: Cattle in a drift (1902)
145. Pieter Wenning: Jour d'hiver (1915)
146. Anton van Wouw: Landscape with spruit (1896)
147. Maggie Laubser: Harvesters in Belgium (1921/22)
148. Maggie Laubser:
149. Irma Stern
150. JH Pierneef:

ABBREVIATIONS

? = possible

A Leigh = Alana Leigh

B Haden, G's Bay = Bryan Haden, Gordon's Bay

BE = Bertha Everard

BK = Bertha King

Bloem = Bloemfontein

Bury = Catherine Bury

c. = circa

cm = centimetre

CT = Cape Town

DAG = Durban Art Gallery

fam. coll = Family collection

JHB = Johannesburg

JHB = Johannesburg

LEH = Leonora Everard Haden

N Leigh = Nichola Leigh

nd = not dated

PMB = Pietermaritzburg

Private coll = private collection

R = Ruth Everard

SA House = South Africa House, London

SANG = South African National Gallery, Cape Town

SKE Plett = Sebastian K Everard, Plettenberg Bay

Std Bank Corp = Standard Bank Corporation

TAG = Tatham Art Gallery, Pietermaritzburg

Univ. of Pretoria = University of Pretoria



Figure 1

Bertha King
Water lily pond (1895)
 Watercolour on handmade
 paper
 33 x 45 cm
 Signed BK
 (fam. coll)



Figure 2

Bertha King
Bridge in a forest
 (1895)
 Oil on wood panel
 26.5 x 37 cm
 Signed BK
 (fam. coll)



Figure 3

Bertha King
Spring trees (21.3.1895)
 Watercolour on handmade
 paper
 34 x 24 cm
 Signed BK
 (fam. coll)



Figure 4
Bertha King
<u>Unfinished portrait of a</u>
<u>lady (nd)</u>
Oil on canvas
61 x 46 cm
Not signed
(fam. coll)



Figure 5
Bertha King
<u>Cottages in Cornwall</u>
(nd)
Oil on canvas
46 x 35.5 cm
Not signed
(SKE, Platt. Bay)



Figure 6
Bertha King
Fishing boats, St Ives (nd)
Oil on canvas board
45.5 x 35 cm
Not signed
(A. Leigh, PMB)



Figure 7
Bertha King
Cornish girl (nd)
Oil on canvas
44 x 35 cm
Signed BK
(B Haden, G's bay)

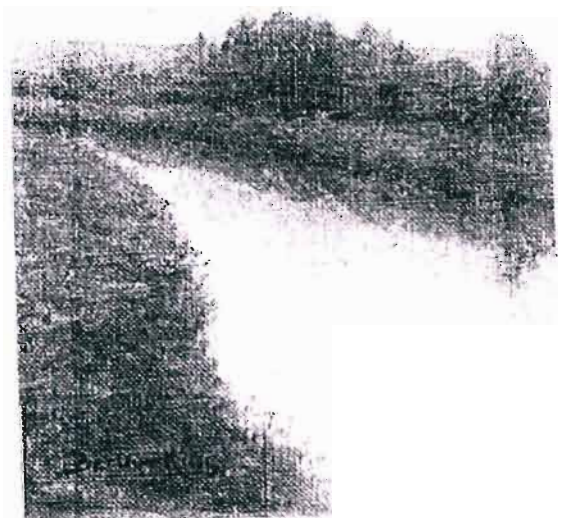


Figure 8
Bertha King
River scene (nd)
Oil on canvas
board
30 x 20 cm
Signed BK
(fam. coll)



Figure 9

Bertha King

Landscape with trees and
cottages (1898)

Oil on canvas

46 x 35.5 cm

Signed BK

(fam. coll)



Figure 10

Bertha King

Sunflowers and
nasturtiums (nd)

Oil on canvas

76 x 61 cm

Signed BK

(fam. coll)

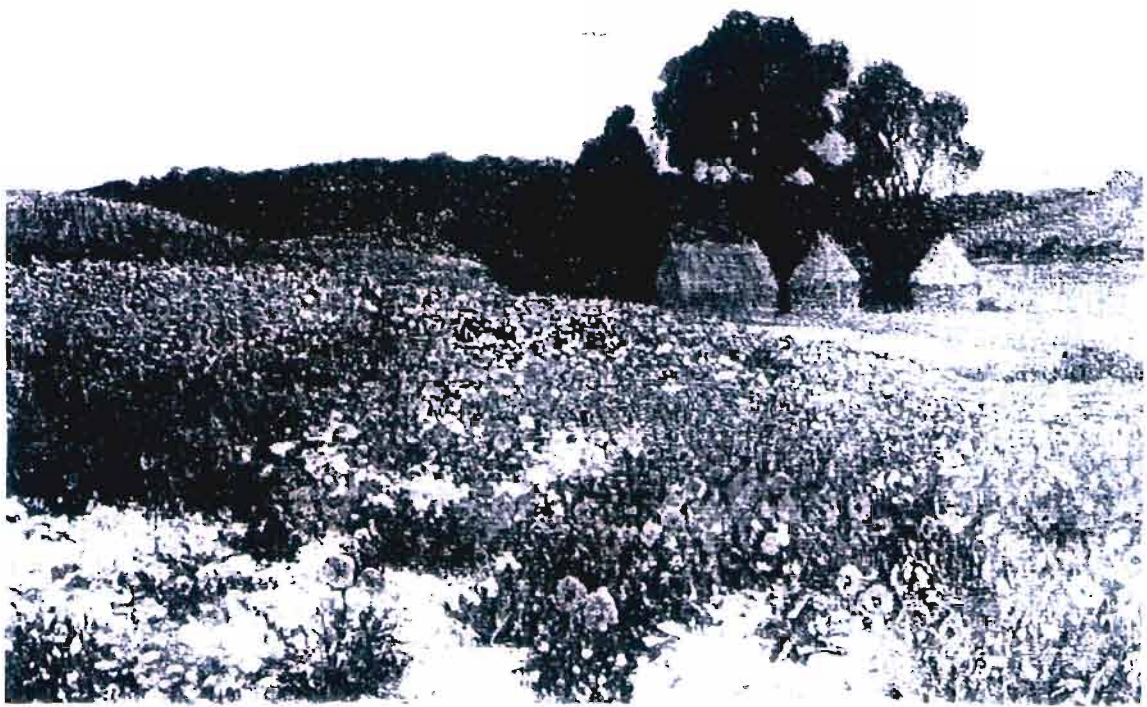


Figure 11
 Bertha King
Kentish poppyfield
 (nd)
 Oil on canvas
 75.5 x 102 cm
 Signed BK & BE
 (R. Fryde JHB)



Figure 12
 Bertha King
Children picking flowers (nd)
 Oil on canvas
 40.5 x 30.5 cm
 Signed BK
 (fam. coll)



Figure 13
Bertha King
Farmyard (nd)
Oil on canvas
46 x 35.5 cm
Signed BE
(fam. coll)



Figure 14
Bertha King
Dune landscape (nd)
Oil on canvas
45.7 x 35.8 cm
Signed BE
(fam. coll)



Figure 15
Bertha King
Study of ducks (nd.
c. 1901)
Oil on canvas
35.5 x 45.5 cm
Signed BK
(fam. coll)



Figure 16
Bertha King
Sketch of Edith
King (nd)
Oil on canvas
41 x 33 cm
Not signed,
incomplete
(fam. coll)



Figure 17
Bertha King
Edith picking flowers
(1900)
Oil on canvas
59 x 74 cm
Signed BK
(TAG)



Figure 18

Bertha King

Clyde Villa, Shortham, Seven Oaks, Kent (nd. c. 1896-1900)

Oil on canvas, wooden stretcher
101 x 76 cm

Signed BK
(fam. coll)

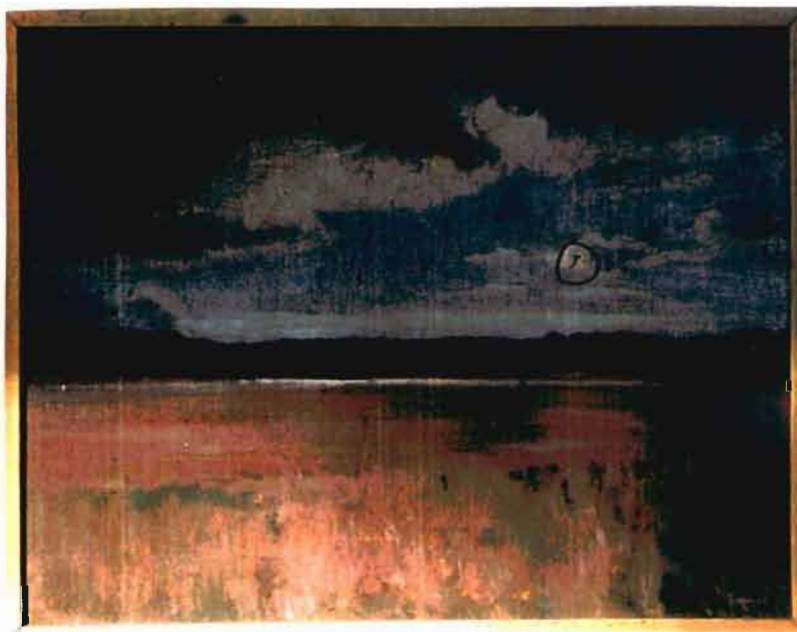


Figure 19

Bertha King

Marsh landscape (nd. pre 1901; possibly St Ives)

Oil on canvas
36 x 46 cm

Signed BK (stretcher)
(fam. coll)



Figure 20

Bertha King/Everard

Sea rocks (nd. early work?)

Oil on canvas on board

30.5 x 35 cm

Not signed

Inscrip: 'by Bertha King (Everard)

Authenticated by LEH

(N. Leigh)



Figure 21

Bertha King

English landscape

with cows

Oil on canvas,
wooden stretcher

33 x 44 cm

Signed BK

(fam. coll)



Figure 22

Bertha King

English landscape with dirt

road (nd. c. pre 1901?)

Oil on board

27.5 x 34.5 cm

Not signed

(fam. coll)



Figure 23
 Bertha King
Men planting cabbages, England
 (nd. c. 1890s)
 Oil on?
 30.5 x 46 cm
 Not signed
 (fam. coll)



Figure 24
 Bertha Everard
River delta (nd)
 (probably early work)
 Oil on canvas
 34 x 23 cm
 Not signed
 Inscript. 'bought by KN
 Bury'
 (fam. coll)



Figure 25
 Bertha or Edith King
Wild flowers, England
 (nd. pre 1901)
 Oil on canvas
 46 x 35.5 cm
 Unfinished
 Presumed to be BK
 (fam. coll)



Figure 26
 Bertha King / Everard
English scene with cottage
and girl playing in water
 (either c. 1899 in Cornwall
 or 1924)
 Oil on board
 35.5 x 26.5 cm
 Not signed
 (fam. coll)



Figure 27

Bertha Everard
Trees, England (nd)
 Oil on canvas
 38 x 45.8 cm
 Signed BE
 (possibly c. 1924)
 (fam. coll)

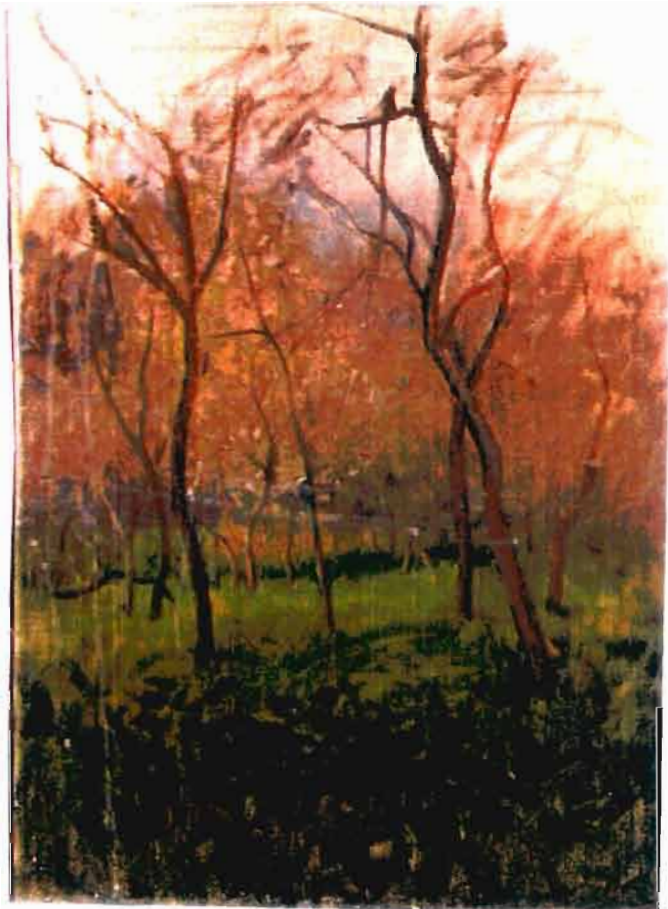


Figure 28

Bertha King
Orchard (nd, early
 work pre 1902)
 Poor condition
 Unfinished
 No further
 particulars available



Figure 29
Bertha King
<u>Dirt road near</u>
<u>Pretoria</u> (nd. c. 1902)
Oil on wood panel
19 x 24 cm
Not signed
(fam. coll)



Figure 30
Bertha King
<u>Tented camp.</u>
<u>Pretoria</u> (nd.c. 1902)
Oil on wood panel
19 x 24 cm
Not signed
(fam. coll)



Figure 31
Bertha Everard
<u>A country store</u> (nd.
c. 1902/3)
Oil on canvas
44 x 69 cm
Signed BE
(SKE, Plett. Bay)



Figure 32

Bertha King

The Bonnefoi store

(nd. c. 1902)

Oil on wood panel

35 x 26 cm

Not signed: inscrip:

'BK'

(fam. coll)

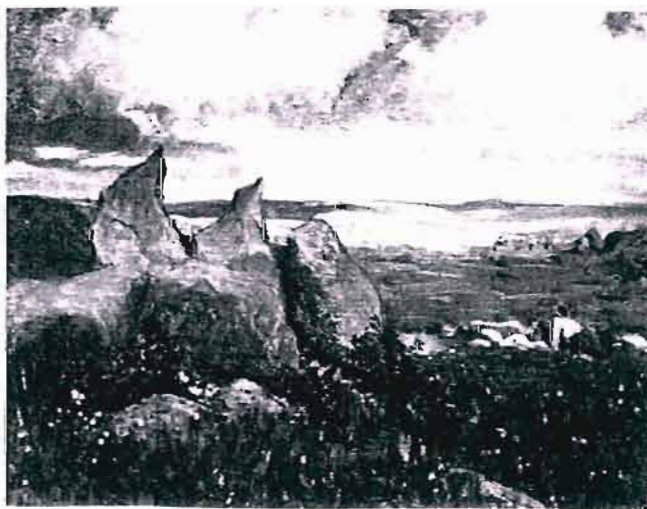


Figure 33

Bertha Everard

Figure in a landscape (nd)

Oil on wood panel

25.6 x 34.5 cm

Not signed

(fam. coll)



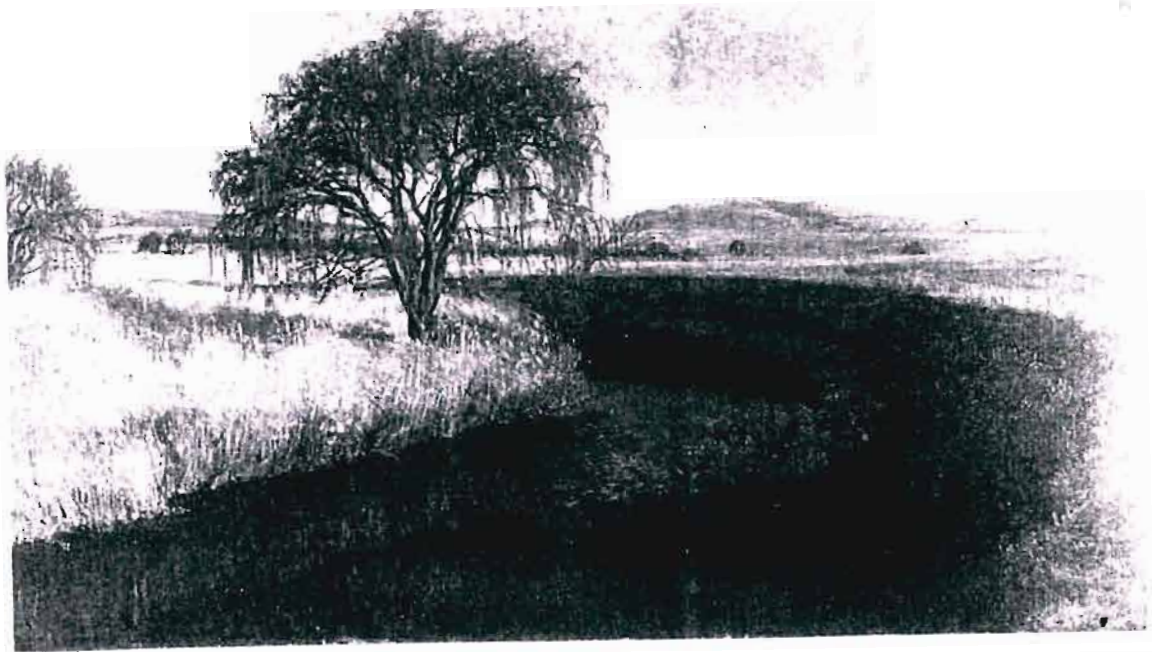
Figure 34
Bertha Everard
Miniature of Edith King (nd)
Watercolour on ivory
medallion
8.5 x 7 cm
Not signed
(unknown)



Figure 35
Bertha Everard
Miniature of Ruth
Everard (nd)
Watercolour on
ivory medallion
7 x 6 cm
Not signed
(unknown)

Figure 36
Bertha Everard
Unfinished portrait of Edith
King and Ruth Everard
(nd)
Oil on canvas
Tondo 69 cm in diameter in
square 70 x 70 cm
Not signed
(unknown)





<p>Figure 37</p> <p>Bertha Everard</p> <p><u>Peace of winter</u></p> <p>(c. 1909)</p> <p>Oil on canvas</p> <p>88 x 157 cm</p> <p>Signed ?</p> <p>(JAG)</p>
--



<p>Figure 38</p> <p>Photograph</p> <p><u>The scene of</u></p> <p><u>Peace of winter</u></p> <p>(1977)</p>



Figure 39
Bertha Everard
Mid-winter on the Komati
or Where the serpentine
Koomati flows a deep
enamelled blue (c. 1910)



Figure 40
Bertha Everard
Starry night (c.
1910)
Oil on canvas
60.5 x 50.5 cm
Signed BE
(fam. coll)



Figure 41

Bertha Everard
Masimini vale (1917)
 Oil on canvas
 45.5 x 61 cm
 Signed BE
 (Std Bank Corp. Coll)



Figure 42

Bertha Everard
The Krantz (nd. c. 1910, exhib
 A. Crafts JHB)
 Oil on canvas
 103 x 77 cm
 Signed BE
 (JAG)



Figure 43

Bertha Everard
A street in
 Carolina (nd)
 Oil on canvas
 board
 25 x 35 cm
 Signed BE
 (H Prins JHB)



Figure 44

Bertha Everard
Asbestos hills (nd.
 c. 1911, exhib RA Lon.)
 Oil on canvas
 Measurements unknown
 (private coll JHB)



Figure 45

Bertha Everard
Bonnefoi picnic (nd)
 Oil on canvas
 46 x 69.5 cm
 Signed BE
 (fam. coll)



Figure 46

Bertha Everard
Moonrise (nd, c. 1924?)
 Oil on canvas
 99.5 x 126 cm
 Signed BE
 (fam. coll)



Figure 47

Bertha Everard
Pale hillside (nd, c. 1924?)
 Oil on canvas
 101 x 127 cm
 Signed BE
 (fam. coll)



Figure 48

Banner for Eunice School
 Designed 1915



Figure 49

Bertha Everard
Winter in the Lowveld (1916)
 Oil on canvas
 43.5 x 59 cm
 Signed BE
 (Oliewenhuis Art Museum, Bloem)



Figure 50

Bertha Everard
The willows or Willows by the watercourses (nd) (c 1916)
 Oil on canvas
 100 x 60 cm
 Signed BE
 Exhib 1917 at 11th Annual Exhibition of
 Natal Art Society, Durban
 (fam. coll)



Figure 51

Bertha Everard
Morning tree (nd)
 (c 1916)
 Oil on canvas
 114 x 73.5 cm
 Signed BE
 (fam. coll)



Figure 52

Bertha Everard
 Early photograph of By the Banks of the Komati showing figures

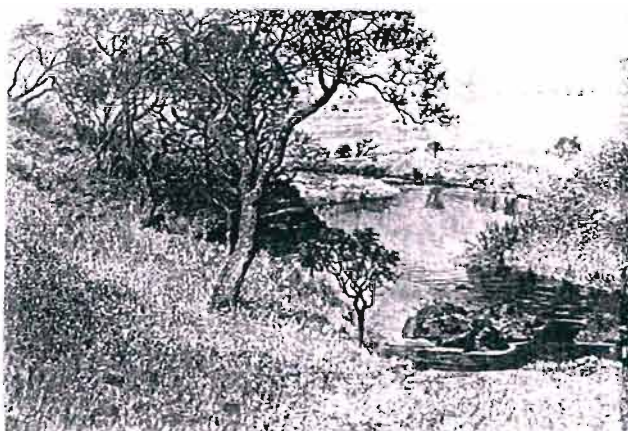


Figure 53

Bertha Everard
By the banks of the Komati (nd)
 (c 1932)
 Oil
 Signed BE
 No further details
 available



Figure 54

Bertha Everard
Spring, eastern
Transvaal (nd)
 Oil on canvas
 76.2 x 77.5 cm
 Signed BE
 (DAG)



Figure 55

Bertha Everard
Winter grass, Transvaal (nd.
 c. 1917 exhib. Dbn, Bloem
 and CT 1922)
 Oil on canvas
 101 x 101 cm with tondo in
 96 cm diam. square
 Signed BE
 (Libertas, Pretoria)

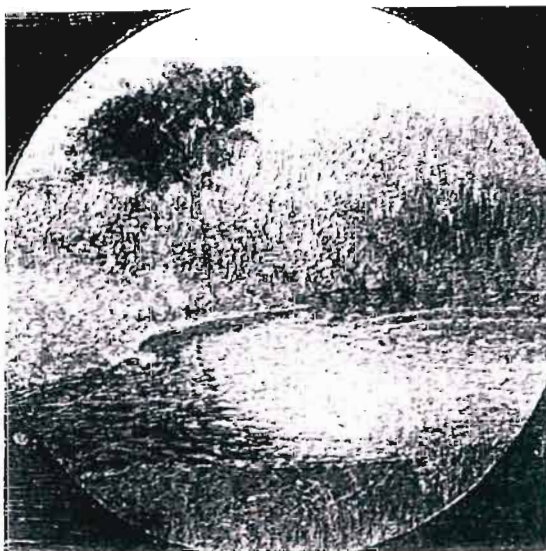


Figure 56

Bertha Everard
Banks of the
Komati (nd.
 c. 1922 exhib CT)
 Oil on canvas
 126 x 126 cm
 tondo
 Signed BE
 (fam. coll)



Figure 57
 Bertha Everard
Wag 'n bietjies or The three
witches (nd)
 Oil on canvas
 61 x 46 cm
 Signed BE
 (F van Proosdij, Pretoria)

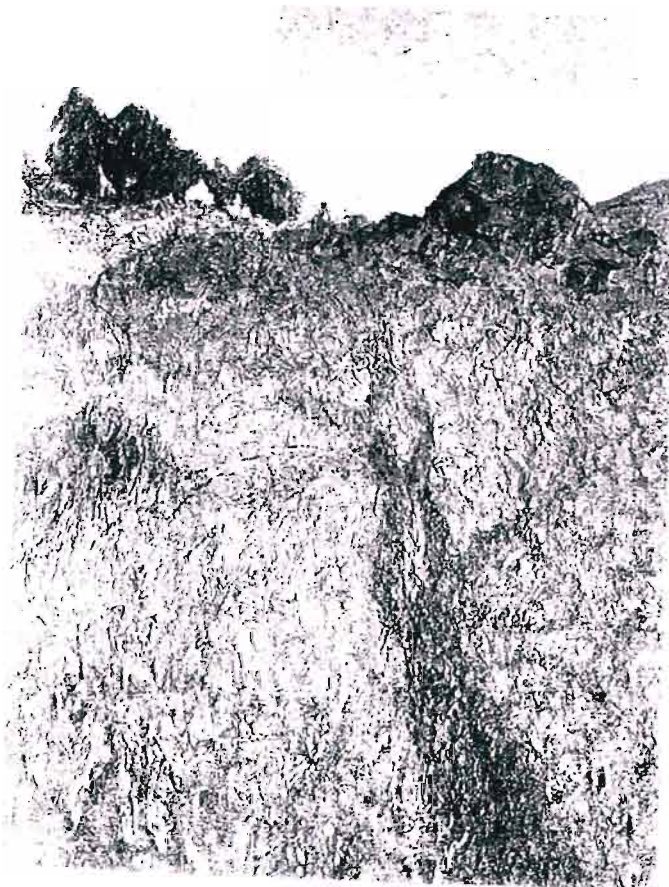


Figure 58
 Bertha Everard
Moon and shadow
 (nd)
 Oil on canvas
 56 x 44 cm
 Further particulars
 unknown
 Exhib. E Group retro.
 1967
 (unknown) (not illus)



Figure 59

Bertha Everard
The Bonnefoi herd of
angora goats (nd. c.
 1916/17,
 Oil on canvas
 77 x 102 cm
 No signature visible
 (SKE Plett. Bay)



Figure 60

Bertha Everard
Tantwani (nd)
 Oil on board
 24.4 x 25.5 cm
 Not signed
 (fam. coll?)



Figure 61

Bertha Everard
Charlie's rocks,
Skurweberg (nd)
 Oil on canvas
 35.5 x 26 cm
 Not signed
 (fam. coll)



Figure 62
Bertha Everard
Tree on Skurweberg (nd)
Oil on wood panel
35 x 26 cm
Not signed
(SKE Plett. Bay)



Figure 63
Bertha Everard
Portrait sketch of Ruth
(on the back of Tree on Skurweberg)(nd)
Oil on wood panel
35 x 26 cm
Not signed
(SKE Plett)



Figure 64
Bertha
King/Everard
View of gum trees
from Bonnefoi (c.
1902)
Oil on board?
35 x 26.5 cm
Not signed
(fam. coll)



Figure 65

Bertha Everard
Rock and
thunderheads.
Skurweberg (nd)
 Oil on canvas
 51 x 30 cm
 Not signed
 (fam. coll)

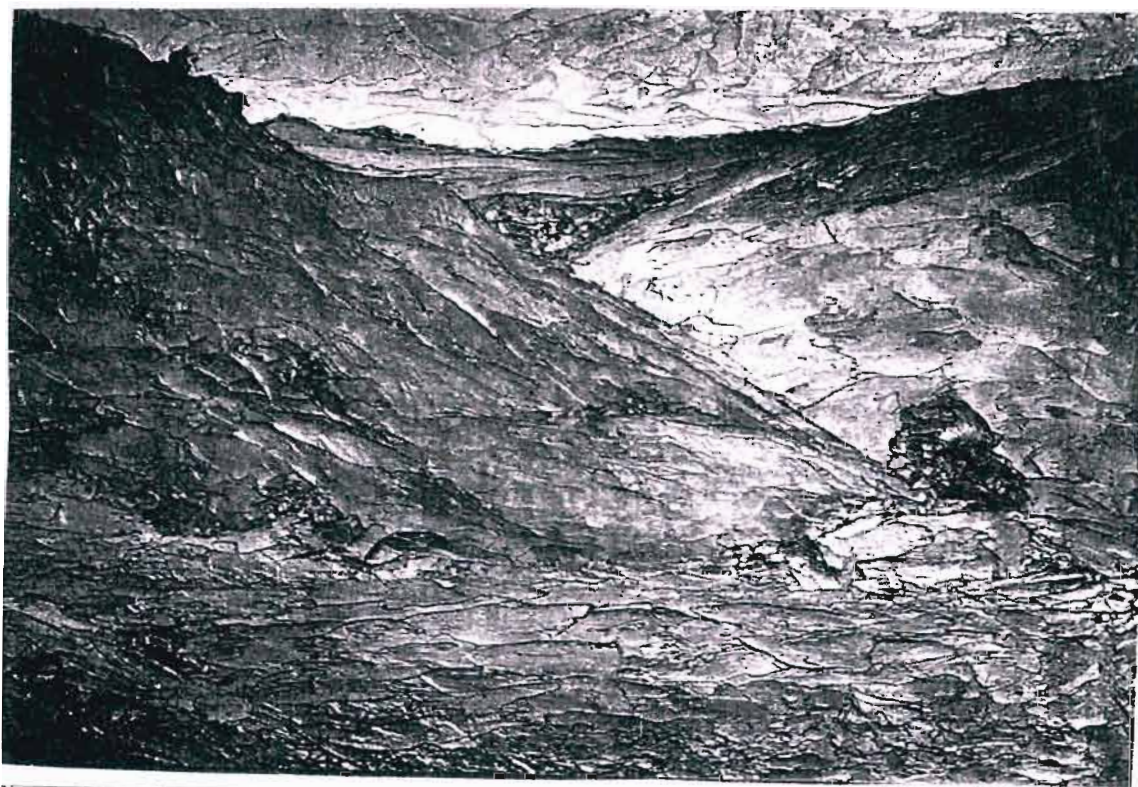


Figure 66

Bertha Everard
Green hills (nd)
 Oil on board
 25 x 34.5 cm
 Signed BE
 (unknown)



Figure 67

Bertha Everard

Baboon valley (c. 1915-1920)

Oil on canvas

76.3 x 60.7 cm

Signed BE

(TAG)

Figure 68

Bertha Everard

Land of Luthany (1917?)

Oil on canvas

100 x 127 cm

Signed BE

(King George VI Art Gall, PE)



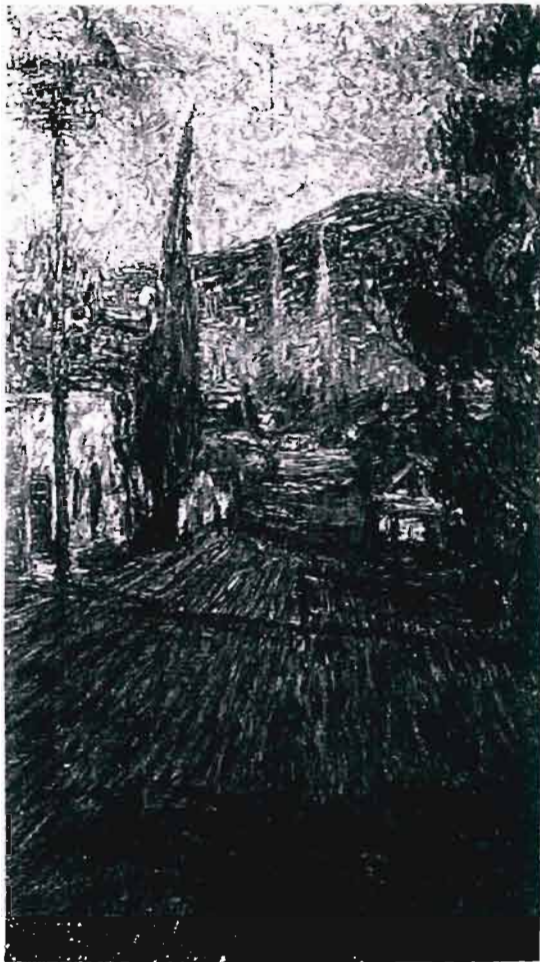


Figure 69

Bertha Everard

The twin-towered church,
Bloemfontein (nd) (c 1919)

Oil on canvas

67.5 x 39 cm

Signed BE

(National Museum, Bloem)



Figure 70

Bertha Everard

Looking towards Swaziland or View
towards Swaziland or Opal valley

(nd. c. 1920/21)

Exhib. RA Lon 1922, Salon Paris
1924, Imp Art Exhib. 1927

Oil on canvas

76 x 102 cm

Signed BE

(Pretoria Art Museum)



Figure 71
Bertha Everard
<u>Leighton House</u>
(nd. c. 1924)
Oil on canvas
board
Not signed
(fam. coll)



Figure 72
Bertha Everard
<u>Rubber factory,</u>
<u>Harpenden</u> (nd. c.
1924)
Oil on board
49.5 x 35 cm
Signed BE
(fam. coll)

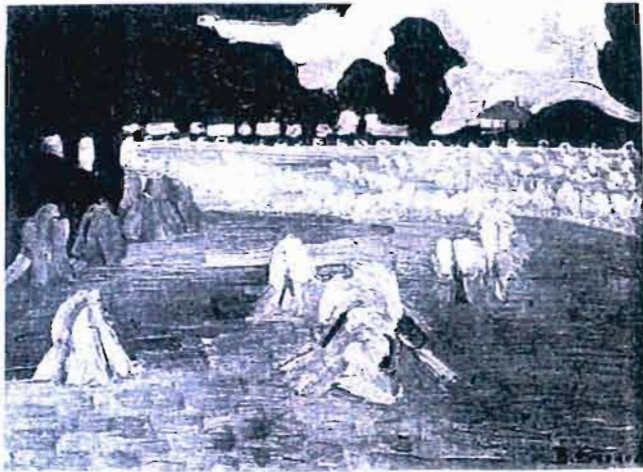


Figure 73

Bertha Everard
Cornfields, Kimpton (nd. c. 1924)
 Oil on board
 25.6 x 34.5 cm
 Not signed
 (fam. coll)

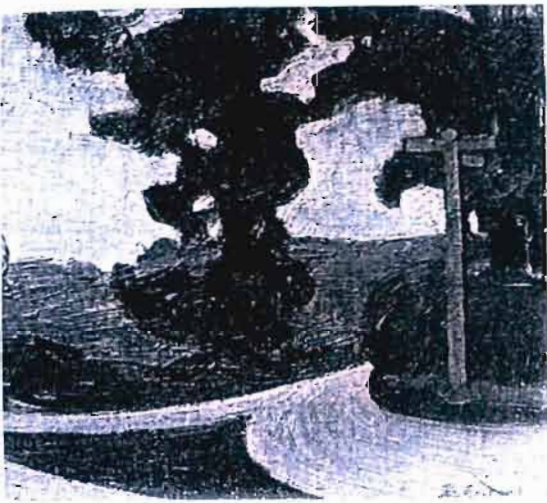


Figure 74

Bertha Everard
Kimpton signpost
 (nd. c. 1924)
 Oil on canvas
 32 x 35 cm
 Signed BE (and
 'Everard' by Bury)
 (fam. coll)



Figure 75

Bertha Everard
Haycover (nd. c.
 1924)
 Oil on canvas
 46 x 61 cm
 Not signed
 (fam. coll)



Figure 76

Bertha Everard
Harpenden (c.
1925)

Oil on canvas
33 x 35 cm

Not signed

Back inscription: E
L King



Figure 77

Bertha Everard
English landscape with trees
(nd) (c 1924)

Oil on board
24 x 16 cm

Signed BE
(fam. coll)



Figure 78
 Bertha Everard
English landscape with
 trees (c. 1924)
 Oil on board
 24 x 16 cm
 Signed BE
 (fam. coll)



Figure 79
 Bertha Everard
Foxgloves in forest (c. 1923/4)
 Oil on board
 35.5 x 27.5 cm
 Not signed
 (fam. coll)



Figure 80

Bertha Everard

Road through trees (nd) (c
1924?)

Oil on canvas board

33 x 35 cm

Signed BE

(A. Leigh, London)



Figure 81

Bertha Everard

Trees, England
(nd)

Oil on canvas
board

38 x 45.8 cm

Signed BE

(fam. coll)



Figure 82

Bertha Everard
Chantilly Woods
 (nd) (c 1925)
 Oil on canvas board
 34 x 25.5 cm
 Indistinctly signed
 BE
 (fam. coll?)



Figure 83

Bertha Everard
Dancing tree (nd. c.
 March 1925)
 Oil on canvas board
 46 x 38 cm
 Signed BE
 (fam. coll)

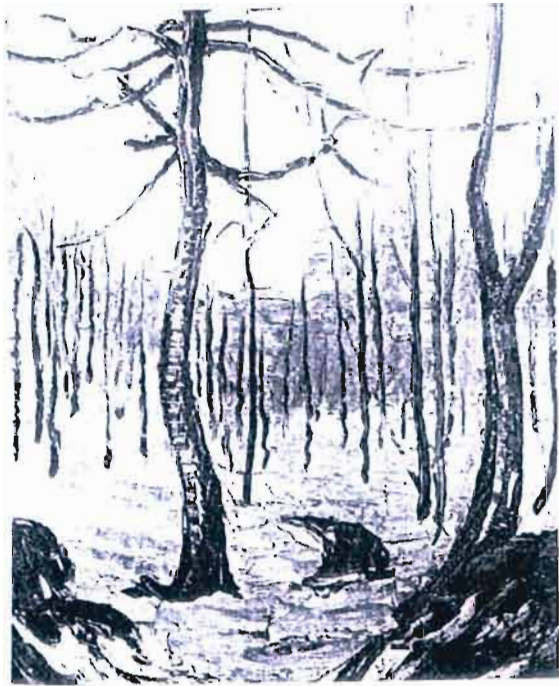


Figure 84

Bertha Everard
Chantilly Woods (nd. c.
 1925)

Oil on canvas board

44.5 x 37.5 cm

Not signed ('Everard' by
 Bury)

(B Haden, G's Bay)



Figure 85

Bertha Everard
House at Bruneval
 (nd. c. 1925)

Oil on canvas

46 x 55 cm

Not signed ('Everard'
 by Bury)

(fam. coll)

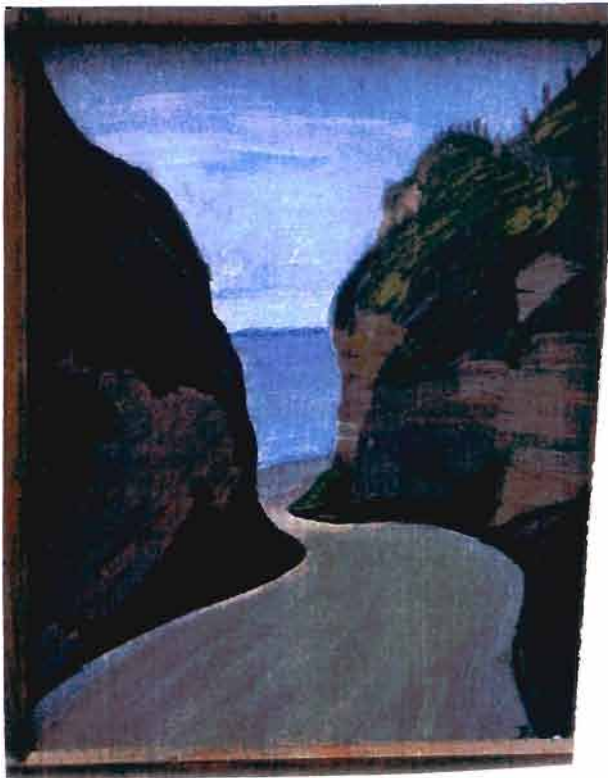


Figure 86

Bertha Everard
(Bruneval) Road to the sea (1925)
 Oil on canvas board
 45.5 x 38 cm
 Signed BE
 (Std Bank Corp. Coll)



Figure 87

Bertha Everard
Cliff at Bruneval
 (nd) (c 1925)
 Oil on canvas
 55 x 46 cm
 Signed BE
 (fam. coll?)



Figure 88

Bertha Everard
Cliff at Bruneval (nd.
 c. 1925)
 Oil on canvas
 55 x 46 cm
 Signed BE
 (fam. coll)



Figure 89

Bertha Everard
Cliff with path,
Bruneval
 No further
 particulars
 available
 (fam. coll)



Figure 90

Bertha Everard
Road to Bruneval (nd. c.
 1925)
 Oil on board?
 No further particulars
 available
 (A. Leigh, London)



Figure 91

Bertha Everard
Wheatfields, Normandy or
Wheatfields and blue sky
 (nd. c. 1925)
 Oil on canvas
 47 x 56 cm
 Signed BE
 (TAG)



Figure 92

Bertha Everard
Ploughed land, Normandy
 (nd. c. 1925)
 Oil on canvas
 38 x 45 cm
 Signed BE
 (TAG)



Figure 93

Bertha Everard
Paysage (nd. c. 1925)
 Oil on canvas
 65 x 46 cm
 Signed BE
 (SKE Plett. Bay)



Figure 94

Bertha Everard
Longueval 1 (nd. c. 1926)
 Oil on canvas board
 54.5 x 71.5 cm
 Signed BE ('Everard' by
 Bury)
 (SANG)



Figure 95

Bertha Everard
Road to Longueval (nd. c.
 1926)
 Oil on wood panel
 35 x 26.5 cm
 Signed BE
 (fam. coll)



Figure 96

Bertha Everard
Road to Flair (nd. c.
 1926)
 Oil on canvas board
 37.5 x 45.5 cm
 Signed BE
 (fam. coll)



Figure 97

Bertha Everard
House and fields (nd. c 1926?)
 Oil on board
 24 x 16 cm
 Not signed
 (fam. coll)



Figure 98

Bertha Everard
Road and
 telephone poles 2
 (nd. c 1926?)
 Oil on board
 24 x 16 cm
 Not signed
 (fam. coll)



Figure 99

Bertha Everard
Road and telephone
 poles 1 (nd. c. 1926?)
 Oil on board
 24 x 16 cm
 Not signed
 (fam. coll)

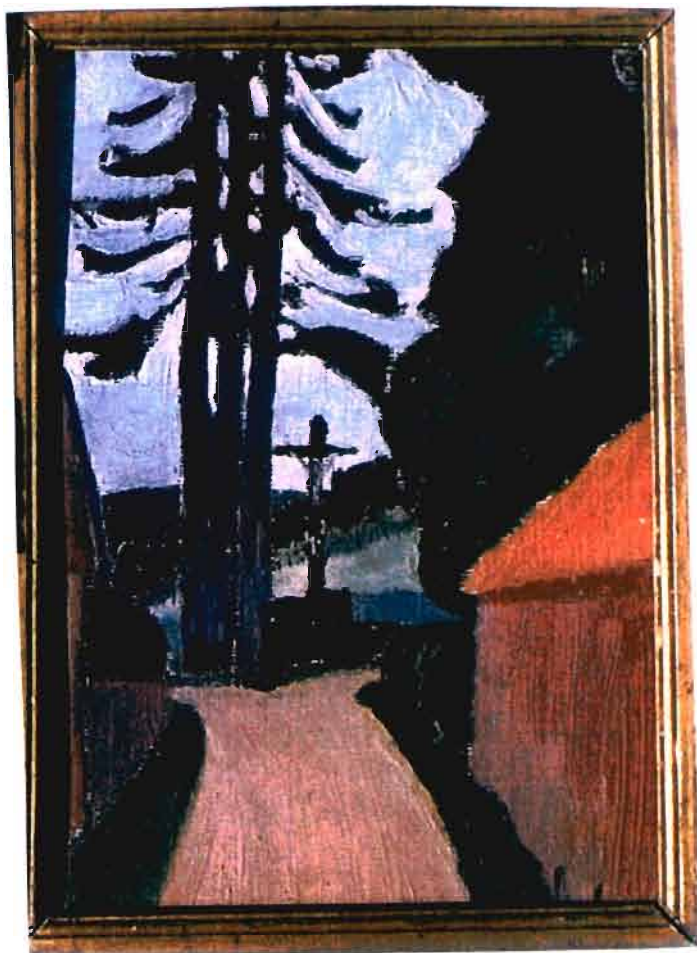


Figure 100

Bertha Everard
Road, pines and
 crucifix (c. 1925)
 Oil on canvas board
 22 x 16 cm
 (fam. coll)

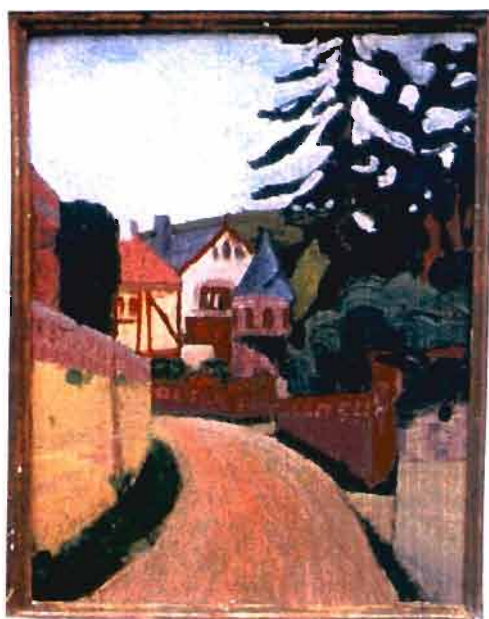


Figure 101

Bertha Everard
Road through village (South of
 France) (c. 1925)
 Oil on board
 (size?)
 Signed
 (donated to Std Bank/ private
 coll JHB?)

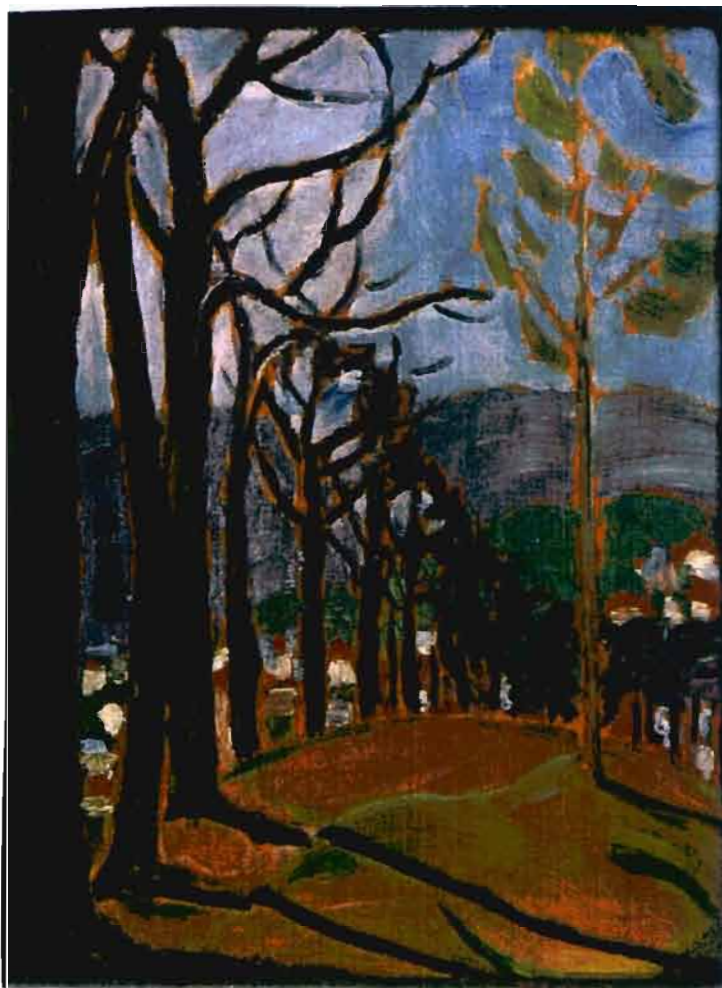


Figure 102

Bertha Everard

Chantilly Woods (c. 1925)

Not signed

No further particulars
available

(fam. coll)



Figure 103

Bertha Everard
Delville Wood, ten years later (nd. c. 1926)
 Oil on canvas on board
 54.5 x 72 cm
 Not signed
 (?)



Figure 104

Bertha Everard
Landscape with crater
 (nd. c. 1926)
 Oil on canvas
 37 x 45 cm
 Signed BE
 (Univ. of Pretoria)



Figure 105

Bertha Everard
Trees and trenches of Delville Wood (nd. c. 1926)
 Oil on canvas
 88 x 116 cm
 Signed BE
 (Pretoria Art Museum)



Figure 106
Bertha Everard
<u>Shell holes, Delville</u>
<u>Wood</u> (nd. c. 1926)
Oil on canvas on board
50 x 42 cm
Signed BE indistinctly
(SANG)



Figure 107
Bertha Everard
<u>Delville Wood</u> (nd.
c. 1926)
Oil on canvas
109 x 74 cm
Not signed
('Everard' by Bury)
(SA House, London)



Figure 108

Bertha Everard
Delville Wood (nd. c.
 1926)
 Oil on board
 26.5 x 34.5 cm
 Signed BE
 (fam. coll)
 (EP exhib 2000)



Figure 109

Bertha Everard
Three tall tree trunks,
Delville Wood (c.
 1926)
 Oil on canvas
 74 x 55.8 cm
 Signed BE
 (fam. coll)



Figure 110

Bertha Everard

Monument and cemetery,

Delville Wood (nd. c.

1926)

Oil on canvas board

38 x 46 cm

Signed BE

(fam. coll)



Figure 111

Bertha Everard
Bend in the river,
Lekkerdraai (nd.)
 Oil on canvas board
 46 x 54.5 cm
 Signed BE
 (fam. coll)



Figure 112

Bertha Everard
The new furrow (nd. c. 1928,
 exhib. 1931)
 Oil on canvas
 88 x 156 cm
 Signed BE
 (Pretoria Art Museum)



Figure 113

Bertha Everard
Hills, eastern Transvaal
 (nd. c. exhib. 1931)
 Oil on canvas
 Signed BE
 (SKE Plett. Bay)



Figure 114
Bertha Everard
Small furrow
(nd)
Oil on canvas
board
55.2 x 45.5
cm
Signed BE
(SKE Plett.
Bay)



Figure 115
Bertha Everard
Lekkerdraai 1 or
Evening in the Komati valley
(nd. c. 1934, exhib. 1935)
Oil on canvas
121.5 x 183 cm
Signed BE
(SANG)



Figure 116
Bertha Everard
Dawn on the Komati (nd.
c. exhib 1937, JHB)
Oil on canvas
152 x 213 cm
Signed BE
(Rand Mines, JHB)



Figure 117

Bertha Everard

Lekkerdraai 2 (nd)

Oil on canvas

101 x 128 cm

Not signed ('Everard' by
Bury)

(fam. coll)

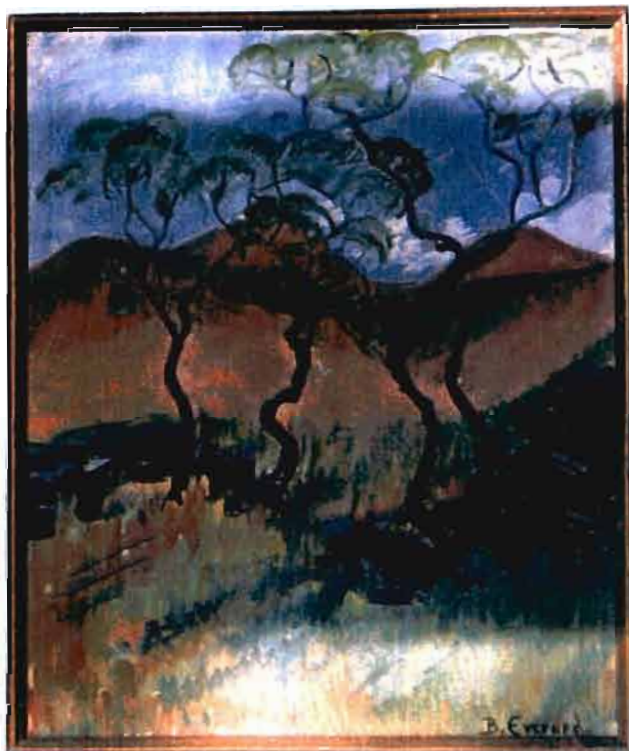


Figure 118

Bertha Everard

Four young trees

(nd)

Oil on canvas

Signed BE

(fam. coll)

(last documented
work)



Figure 119

Bertha Everard
Road to river or
dam.

Transvaal
landscape (nd)

Oil on canvas board
54.8 x 45.8 cm
Signed BE
(fam. coll)



Figure 120

Bertha Everard
Landscape with tree
(nd)

Oil on canvas
25 x 35.5 cm
Signed Everard, initial
vague
(fam. coll)



Figure 121

Bertha Everard
Tree in ploughed land,
Boshoek or Lekkerdraai
(1936)

Oil on canvas
(25 x 35.5 cm?)
Signed BE
(fam. coll)



Figure 122

Bertha Everard

Yellow and pink hillside with clouds or Winterveld with cloud shadow at Boshhoek or Lekkerdraai (nd)

Oil on canvas board

33 x 35 cm

Inscription by Ruth: 'painted by BE'

(fam. coll)



Figure 123

Bertha Everard

Sunlit Hills and Cliff

(unfinished) (c. 1916)

Oil on canvas

60.5 x 45.5 cm

Not signed

(fam. coll)



Figure 124

Bertha Everard
African woman
seated in kraal (nd)
 Oil on canvas,
 wooden support
 78.5 x 70 cm
 Not signed
 (fam. coll)



Figure 125

Bertha Everard
African baby in yellow grass
 (nd)
 Oil on canvas, wooden support
 54.5 x 45 cm
 Not signed
 (fam. coll)



Figure 126

Bertha Everard
Empty building in
 landscape (nd)
 Oil on canvas board
 38 x 46 cm
 Not signed
 Inscript: BE on back
 Date and place uncertain,
 possibly Delville Wood?
 (B. haden, G's Bay?)



Figure 127

Bertha Everard
Ploughed fields and shadows
 (Kimpton?) (nd) (c 1924)
 Oil on canvas board
 30 x 40.5 cm
 Signed BE
 (fam. coll)



Figure 128
Drawing of Ruth Everard
by Bertha Everard



Figure 129
Drawing of Edith King
by Bertha Everard



Figure 130
Drawing of Rosamund
Everard by Bertha Everard



Figure 131
Landscape drawing
by Bertha Everard

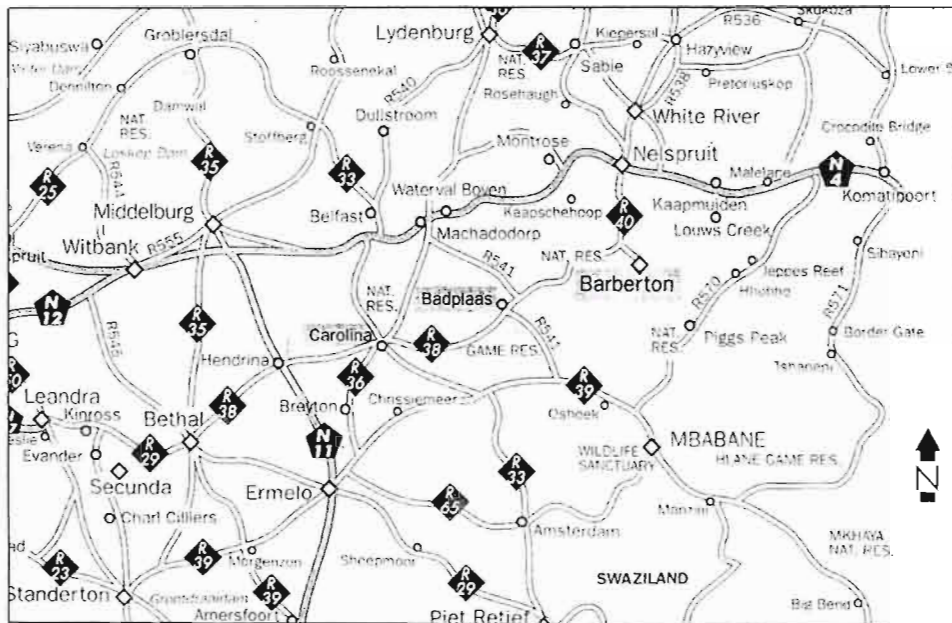


Figure 132
Map of Mpumalanga
(formerly Eastern Transvaal)



Figure 133

Photograph of Bertha
Everard at the time of
her marriage (1902)



Figure 134

Photograph of Charles
Everard at the time of
his marriage (1902)



Figure 135

Photograph of Bertha
Everard before returning
to South Africa (1926)



Figure 136
Photograph of Bertha carrying
Sebastian
(c 1910)



Figure 137
William E Osborn
Seascape in moonlight (nd)
Oil on canvas
102 x 128 cm



Figure 138
Edith King
Kloof trees, Riverlands
(nd)
Watercolour on brown
paper
44.5 x 36 cm
Not signed
(TAG)



Figure 139
Ruth Everard Haden
Barbeton mountains
(nd)
Oil on canvas
82 x 101 cm
Signed REH
(TAG)



Figure 140
Rosamund Everard
Petra (nd) (c 1937)
Oil on canvas
57.5 x 72 cm
Signed RKE
(TAG)



Figure 141

Rosamund Everard
Violets (nd) (c 1936)
Oil on mounted canvas
40.2 x 33.2 cm
Signed RKE



Figure 142

Allerly Glossop
Untitled (nd)
Gouache on paper
(TAG)



Figure 143

Leo Francois
Mhloti, Zululand (nd)
Oil on board
(TAG)



Figure 144
Frans Oerder
<u>Cattle in a drift</u> (1902)



Figure 145
Pieter Wenning
<u>Jour d'hiver</u> (1915)



Figure 146
Anton van Wouw
<u>Landscape with spruit</u> (1896)



Figure 147
Maggie Laubser
<u>Harvesters in Belgium</u> (1921/22)



Figure 148
Maggie Laubser
Woman with purple doek
(nd)
Oil on board
(TAG)



Figure 149
Irma Stern
The flower seller
(1935)
Oil on canvas
(TAG)



Figure 150
JH Pierneef
Karoo c.1937
Oil on canvas on
panel
(JAG)