

LIST OF IMAGES

- Figure 1.** *Kist* (mid 1950s). (opp.p 78)
Figure 2. *Welsh Dresser*, c. 1955. (opp.p 78)
Figure 3. *Africa* c.1955 . Inset, *Welsh Dresser*. (opp.p 78)
Figure 4. *Springbok* c.1955. (opp.p 78)
- Figure 5.** *Music Cabinet*, 1960-1961. (opp.p 80)
Figure 6. *Music Cabinet, Shelving*, 1960-1961. (opp.p 80)
Figure 7. *Calculations for the Music Cabinet*, (opp.p 80)
Figure 8. *Oval Table*, 1961. (opp.p 80)
- Figure 9.** *Portrait Heads on Jewellery Box*, 1954. (opp.p86)
Figure 10. *Hut with Ikhothamo*, 1954. (opp.p86)
Figure 11. *Warrior*, 1954. (opp.p86)
- Figure 12.** *Landscape Scene I on Kist* (opp.p87)
Figure 12a. *Kist* (mid 1950s). (opp.p87)
Figure 13. *Landscape Scene II (Kraal Scene) on Kist*, mid 1950s. (opp.p87)
Figure 14. *Side Panel I on Kist*, mid 1950s. (opp.p87)
Figure 15. *Side Panel II on Kist*, mid 1950s. (opp.p87)
- Figure 16.** *Warrior and Maidens* (1975) (opp.p88)
- Figure 17.** *Exhibition Space, 'Kultur der Zulu'*, (opp.p111)
Figure 18. *Mother and Child*, 1975 (opp.p111)
Figure 19. *baNtu*, June 1976, (opp.p111)
Figure 20. *Zondi with Adam and Eve* (1959) (opp.p111)
Figure 21. *Zondi carving in high relief* (opp.p111)
- Figure 22.** J. Wolfgang Bodenstein, *Blessing* (1962)(opp.p151)
Figure 23. J. Wolfgang Bodenstein, *Michael and Mandlenkosi Zondi* (1962) (opp.p151)
- Figures 24;25;26.** *Socrates* (1974) (opp.p150)
- Figure 27.** J. Wolfgang Bodenstein, *Johannes der Täufer (John the Baptist)* c.1961. (opp.p165)
Figures 28;29. J. Wolfgang Bodenstein, *Trauernde Mutter (Mourning Mother)*, 1961. (opp.p165)
- Figures 30;31;32.** *Robed Woman*, 1968. (opp.p167)
Figure 33. MZ 068 *Signature Inscription of Robed Woman*, 1968. (opp.p167)
- Figure 34.** *Tray*, early 1950s. (opp.p171)
Figure 35. *Book Supports*, early 1950s. (opp.p171)
Figure 36. *Two Figurines with Load*, early 1950s. (opp.p171)
Figure 37. (at left) **Lazarus Shezi**, *Young Woman*, 1954. Wood unknown.
(at right) **Michael Zondi**, *Nozizwe**, 1954. (opp.p171)
Figure 38. *Flower Embellishment on Kist*, 1960s. Possibly Teak. (opp.p171)
- Figure 39.** *Pair of Zulu Heads*, 1959. Perhaps teak. (opp.p173)
Figure 40;41. *Pair of Zulu Heads on Roundels*, 1959. (opp.p173)
Figure 42. *Zulu Female Head on Roundel*, late-1950s. (opp.p173)
Figure 43. *Female Head*, late-1950s. Perhaps *umThombothi* . (opp.p173)
- Figure 44,45** *Christ on the Cross*, c.1955. (opp.p174)
Figure 46,47. *Christ on the Cross*, mid-1950s (opp.p174)
Figure 48. *Christ on the Cross*, mid-1950s (opp.p174)
Figure 49. *Michael Zondi with his Self-Portrait of 1961*. (after 174)
- Figure 50.** Hertell. *Appelsbosch Workshop*. (opp.p176)

- Figure 51.** *The Scourge**, 23 May 1960. (opp.p177)
Figure 52. *Der Rächer* (The Avenger) (opp.p177)
- Figure 53.** *The Prophet* (or *Pilgrim*), 1961. *umThombothi* . (opp.p179)
Figure 54. *The Prophet* (Detail). (opp.p179)
Figure 55. *Pilgrim*, 23 May 1960. (opp.p179)
Figure 56. *Bearded Old Man*, mid 1960s. (opp.p179)
- Figure 57.** *Female Torso*, mid-1960s. (opp.p180)
Figure 58;58a. *Madonna*, 1969. (opp.p180)
Figure 59. *Female Head*, 1969. (opp.p180)
Figure 60. *Queen*, 1969. (opp.p180)
- Figure 61;61a.** *Woman*, 1972. Red Ivory. (opp.p181)
Figure 62. *Tall Cloaked Woman* , 1980s. (opp.p181)
Figure 63. *Female Head*, 1973. (opp.p181)
Figure 64. *Zola** (Become, still, quiet), 1974. (opp.p181)
Figure 65. *Shibiza**, 1974. (opp.p181)
- Figure 66.** *Female Head*, late-1970s. (after 181)
Figure 67. *Female Head*, 1982 (after 181)
- Figure 68.** *Kadebune**, 1956. probably (two after p181)
Figure 69. *Cloaked Young Man* (detail), 1970. (two after p181)
Figure 70. *Young Man (with Attitude)*(detail), 1978(two after p181)
Figure 71. *Christ*, 1973. (two after p181)
- Figure 72.** *Female Head* (detail), 1972 (opp.p182)
Figure 73. *Zulu Female Head on Roundel*, late-1950s (opp.p182)
Figure 74. *Graduate* (detail), mid-1960s. (opp.p182)
Figure 75. *Ntombi* (Girl)*(detail) 1973. (opp.p182)
- Figure 76.** *Elegance*, 1975. (after p182)
Figure 77. *isiHambi*, 1975. (after p182)
Figure 78. *Prophet*, 1976. (after p182)
Figure 79. *Umsizigazi* (Parish Woman)*, 1974. (after p182)
Figure 80. *Woman*, 1975. (after p182)
- Figure 81.** *Couple* (Husband/Wife*), 1973. (opp.p183)
Figure 82. *Madonna*, 1973. (opp.p183)
Figure 83. *The Virgin** 1974. (opp.p183)
- Figures 84;85;86.** *Commemorating Death** (of Zondi's Father, David, called *Sibembane* ,1973. (after p183)
- Figures 87;88.** *Nude with Long Hair*, 1967. (two after 183)
Figures 89;90. *Tall Female with Brush*, 1970. (two after 183)
- Figure 91.** *Scratch my Back* , 1974. (opp.p184)
Figure 92. *Dancing Woman*, 1974. (opp.p184)
Figure 93. *Dancing Woman*, 1974. (opp.p184)
Figure 94. *The Raionbow*, 1974. (opp.p184)
- Figure 95.** *Scholar*, late-1970s. (after p184)
Figure 96. *The Young Prophet*, 1977. (after p184)
Figure 97. *Bearded Man*, 1978. (after p184)
- Figure 98.** *Zondi carving Bearded Man*, 1978. (after p184)
- Figure 99.** Eckhard Bodenstern. *Geometrical Head*, 1970. (two after p184)
Figure 100. *Smiling Woman*, (two after.p184)

- Figure 101.** *Woman*, 1974/75. (opp.p185)
Figure 102. *Challenge*, 1975. (opp.p185)
Figure 103. *Robed Woman*, 1970s. (opp.p185)
- Figures 104;105.** *Head*, 1977. (after p185)
Figures 106;107 *Female Head*, undated (c. 1977/78. (after p185)
- Figures 108;109;110.** *Standing Woman*, 1977. (opp.p186)
Figure 111. *Prayer*, 1978. (opp.p186)
- Figures 112;113;114.** *Young Man with Cape*, 1978. (after p186)
- Figures 115;116.** *Serene**, 1979. (two after 186)
Figure 117. *Primadonna**, 1979. (two after 186)
- Figure 118.** *Mother and Child*, late-1970s.(opp.p187)
Figure 119. *Tokoloshi Says it with Flowers**, 1982. (opp.p187)
Figures 120;121. *Boy with a Dog*, 1983. (opp.p187)
- Figures 122;123.** *Tit Bit**,1974. (after p187)
Figure 124. *Thokoza **, 1974. (after p187)
- Figure 125.** *Apple Thief**,1974.(two after p187)
Figure 126. *Apple Thief**,1974. (two after p187)
Figure 127. *Zondi carving Apple Thief*, 1974 (two after p187)
Figure 128: *Zondi carving Apple Thief*, 1974. (two after p187)
- Figure 129.** *Laughing Duck** (or *Madadeni Duck**), 1965. (opp.p188)
Figure 130. *Happy Homecoming*, 1974. (opp.p188)
Figures 131,132. *Happy Homecoming*, 1974 (opp.p188)
- Figure 133.** *Contortionist* , 1975. (after p188)
Figures 134,135. *Pain* , 1982. (after p188)
- Figure 136;137.** *Sacred Harvest*, acq. 1981. (two after p188)
Figure 138;139. *Rural Church Woman*, 1979. (two after p188)
- Figure 140.** *Twisted Woman* , (opp.p189)
Figure 141;142. *Woman*, 1980s. (opp.p189)
Figure 143. *Fragment*, 1980s. (opp.p189)
- Figures 144;145.** *Opening Ceremony*, Durban Art Gallery. (opp.p190)
Figure 146. *Michael Zondi with Madame Z. Wisznicka-Kleczynska*, (opp.p190)
Figure 147. *Unidentified film makers recording the opening*. (opp.p190)
- Figure 148.** *Joy of Living** (or *Felix*), 1965. (opp.p194)
Figure 149. *De Kleine Johannes**, 1969. (opp.p194)
Figure 150. *Umfana Isigangi** (Mischievous Boy), 1969. (opp.p194)
Figure 151. *Poor Boy**(1960s). (opp.p194)
Figure 152. *Boy with Jacket* (1960s). (opp.p194)
Figure 153. *Boy with Jacket* (1980s). (opp.p194)
- Figure 154.** *Johannes (Bodenstein) and Michael Zondi*. (opp.p204)
- Figure 155.** *Zondi carving Adam and Eve*, (opp.p206)
Figure 156. *Zondi carving a Couple*, mid-1960s. (opp.p206)

- Figure 157.** *Forest Queen*, 1974. (opp.p207)
Figure 158. *Forest Queen*, 1974. (opp.p207)
Figure 159. *Forest Queen* (opp.p207)
- Figure 160.** *Togetherness**, (or *Love in Bloom*) 1964, (opp.p210)
Figure 161. *Wedding Couple*, 1972. (opp.p210)
Figure 162. *Handshake on Kist*, 1960s. (opp.p210)
Figure 163. *Give and Take**, 1978. (opp.p210)
Figure 164. *Handshakes* (opp.p210)
Figure 165. *Insignia of Inkatha ka Zulu*, 1925. (opp.p210)
- Figure 166.** *Landscape*, 1955, (opp.p211)
Figure 167. *Warrior*, early 1950s. (opp.p211)
Figure 168. *Khandamdevu**, 1978, early 1950s. (opp.p211)
- Figure 169.** *Zulu Patriarch*, 1954. *umThombothi*. (opp.p212)
Figure 170. *Girl Figurine*, c.1954. (opp.p212)
Figure 171. *Girl with Mielie*, c.1954. (opp.p212)
- Figure 172.** *Nobubele**, 1956. (opp.p213)
Figure 173. *Kadebune**, 1956. (opp.p213)
Figure 174. *Nobubele* and Kadebune**(opp.p213)
Figure 175. *Nobuhle**, 1956. (opp.p213)
Figure 176. *Dancing Woman I*, 1960. (opp.p213)
Figure 177. *Dancing Woman II*, 1960. (opp.p213)
- Figure 178.** *Shaka ** (or *Shaka Zulu*), 1965. (opp.p219)
Figure 179. *Shaka ** (or *Shaka Zulu*), 1965. (opp.p219)
Figure 180. *Shaka Between Good and Evil**, c. mid-1960s. (opp.p219)
Figure 181. *Shaka Between Good and Evil**, c. mid-1960s. (opp.p219)
Figure 182. *The Emperor**, 1969. (opp.p219)
- Figure 183.** *Shaka's Mother**, or *Nomngqovu** (opp.p221)
Figure 184. Photograph: Heinrich Schlaudraff (opp.p221)
Figure 185. *Michael Zondi with NjiloNjilo* (see Fig.182) and *Nomngqovu*, 1965 (opp.p221)
Figure 186. *Mnkabayi kaSenzangakhona, Keeper of the isiGodlo*, 1965. (opp.p221)
Figure 187. *NjiloNjilo** (or *Nongqawuse*, 1965. (opp.p221)
Figure 188. *Michael Zondi with Madame Z. Wisznicka-Kleczyńska*, (opp.p221)
- Figure 189.** *Queen of Sheba* , 1965. *umThombothi* . (opp.p224)
Figure 190. *Queen of Sheba* , 1965. *umThombothi* . (opp.p224)
Figures 191;192. *Kwasa* (It Dawned), 1966. (opp.p224)
Figure 193. *Queen of Sheba* , 1966, (opp.p224)
- Figure 194.** *Sorrowful Mother**, 1960. (opp.p226)
Figure 195. *Sorrow **, 23 May 1960. (opp.p226)
Figures 196;197. *The Prisoner of Hope**, (opp.p226)
Figure 198. *Invisible Bonds**, 1960. (opp.p226)
- Figure 199.** *Disappointment*, (opp.p228)
Figure 200. *Bitterness*, (opp.p228)
Figure 201. *Broken Heart*, (opp.p228)
Figure 202. *The Scourge**, (opp.p228)
Figure 203. *Hands of Triumph** (sic.), (opp.p228)
- Figure 204.** *Moses*, 1959. (opp.p229)
Figure 205. *Moses*, 1959. (opp.p229)
Figure 206. *Michael Zondi and Moses*, (opp.p229)
- Figure 207.** *Portrait of a Young leader* (or *Othello*), 1960. (opp.p232)

- Figure 208.** *Portrait of a Young leader* (or *Othello*), 1960. (opp.p232)
Figure 209. *Portrait of a Young leader* (or *Othello*), 1960. (opp.p232)
- Figure 210.** *Prophet*, 1974 (opp.p233)
Figure 211. *Prophet*, 1974. (opp.p233)
- Figure 212.** *Stille Gebed** (opp.p234)
Figure 213. *Stille Gebed* , 1974. (opp.p234)
Figure 213. *Stille Gebed* , 1974. (opp.p234)
Figures 214;215;216. *Old Man Meditating**, 1974. (opp.p234)
- Figure 217;218;219;220.** (after p234)
- Figure 221;222;223.** *Die Eensame* (The Lonely One)* (opp.p235)
- Figure 224.** *Triumph* (or *Victory*), 1974. (after p235)
Figure 225. *Triumph* (or *Victory*), 1974. (after p235)
Figures 226;227;228. *Triumph (Victory or Liberty)* (after p235)
- Figure 229.** *Bearded Male Head* (opp.p236)
Figure 230. *Head of a Prophet*, 1977. (opp.p236)
Figure 231. *Head of a Prophet I*, 1980s. (opp.p236)
Figure 232. *Head of a Prophet II*, 1980s. (opp.p236)
- Figure 233.** *Male Torso*, 1980s. (after p236)
Figures 234;235. *Undoing Shackles*, 1980. (after p236)
- Figure 236.** *The Prodigal Son*, 1965. (opp.p237)
Figures 237;238. *The Prodigal Son*, 1965. (opp.p237)
- Figure 239.** *Couple in front of Cross*,1961. (opp.p. 238)
Figures 240. *Zondi's Signature 'MZ '61'*; *Nomfundo Zondi-Molefe* (before this p) (opp.p238)
- Figure 241.** *Adam and Eve*, 1959. (opp.p239)
Figure 242. *Zondi with Adam and Eve*, c. mid 1960s (opp.p239)
Figure 243. *Adam and Eve*, mid 1960s. (opp.p239)
- Figure 244.** *Adam and Eve*, 1965. (after p239)
Figure 245. *Adam and Eve*, 1965. (after p239)
Figure 246. *Adam and Eve* (detail), 1965. (after p239)
Figure 247. *Zondi with Adam and Eve*, 1965. (after p239)
- Figure 248.** *Lot's Wife*, 1959. (before p240)
Figure 249. *Lot's Wife*, 1959. (before p240)
Figure 250. *Zondi with Lot's Wife*, c. 1960. (before p240)
Figure 251. *Lot's Wife* (detail), 1959. (before p240)
- Figures 252;253;254;255.** *Rachel*, 1963. (opp.p240)
- Figure 256.** *Reunion* (or *Reconciliation*), 1964. (opp.p241)
Figure 257. *Reunion* (or *Reconciliation*), 1964. (opp.p241)
Figure 258. *Forbidden Friendship* (or *David and Jonathan*) 1964. (opp.p241)
Figure 259. Zondi and Wolfgang Bodenstien pictured with *Reunion* and *Forbidden Friendship*, 1964. (opp.p241)
- Figure 260.** *Hospital Chapel*, Appelsbosch CSM, 1964. (opp.p242)
Figure 261. *Hospital Chapel Interior*, Pews, (opp.p242)
Figure 262. *Hospital Chapel*, *Candelabra.*, (opp.p242)
Figure 263. *Hospital Chapel*, Appelsbosch CSM, 2002 (opp.p242)
Figure 264. *Hospital Chapel*, *Interior During Service*, (opp.p242)

- Figure 265.** *Prophet and Child*, (opp.p243)
Figure 266. Eric Ngcobo, *Nativity Scene* (Mother and Child and Three Men), (opp.p243)
Figure 267. *Font Design*. (opp.p243)
Figure 268. *Baptismal Font - OKHOLWAYO-ABAPHATHIZWE + OYAKU-SINISWA*, (opp.p243)
Figure 269. *Baptismal Font Stand*, (opp.p243)
- Figures 270;271;272** *Christ on the Cross*, (opp.p244)
Figure 273. *Michael Zondi sculpting Christ on the Cross*, (opp.p244)
Figure 274. *Michael Zondi sculpting Christ on the Cross*. (opp.p244)
Figure 275. *Michael Zondi sculpting Christ on the Cross* (opp.p244)
- Figure 276.** *The Publican* 1965 (opp.p245)
Figure 277. *The Publican* (detail) 1965 (opp.p245)
Figure 278. Michael Zondi with *The Publican* (1965), (opp.p245)
- Figures 279;280;281.** *Cross-Bearing Christ*, mid 1970s. (after p245) (this p)
- Figure 282.** *Calvary*, 1968. (before p246)
Figure 283. *Getsemane* (sic.), 1968. (before p246)
- Figures 284;285;286.** *Man after Bath*, 1963. (opp.p246)
- Figure 287.** *The Found One*, late 1950s. (after p246)
Figure 288. *Realisation I*, 1960. (after p246)
- Figure 289.** *The Daughter Speaks and the Father Listens*, 1983. (opp.p247)
Figure 290. *God's Hand*, early 1980s. (opp.p247)
Figure 291. *Father and Son*, 1975. (opp.p247)
Figure 292. *Eternal Bond* (or *Apple of My Eye* or *Family II*), (opp.p247).
- Figures 293;294.** *Determination*, 1978. (opp.p248)
Figure 295. *Seated Young Man*, 1978. (opp.p248)
Figure 296. *Realisation II* (or *Problems*), 1979. (opp.p248)
- Figures 297.** *Dying Young Man**, (or *Memento Mori* or *Sakubona Kufa*), 1960. (after p248)
Figure 298. *Dying Young Man**, 1960. (after p248)
- Figure 299.** *Young Man (with Attitude)*, 1978. (two after p248)
Figure 300. *Young Man with Stick*, 1980s. *umThombothi*. (two after p248)
Figure 301. *Smiling Boy*, 1980s. (two after p248)
- Figure 302.** *Famine*, 1965. (opp.p249)
Figure 303. *Famine*, 1965. (opp.p249)
Figure 304. *(Mother) Earth has taken him Back*, 1983. (opp.p249)
Figure 305. *Another Living Being*, mid-1980s. (opp.p249)
Figure 306. *Long Wait**, 1977. (opp.p249)
- Figure 307.** *Mother** (Zondi's Mother, Eva), 1967. (opp. p250)
Figure 308. *Portrait of Zondi's Mother**, 1970. (opp. p250)
Figure 309. *Portrait of Zondi's Mother**, 1977. (opp. p250)
Figure 310. *Portrait of Zondi's Mother**, 1977. (opp. p250)
- Figures 311;312.** *Madonna and Child*, mid-1960s. (after p250)
Figure 313. *Mother and Child III*, mid-1960s. (after p250)
Figure 314. *Mother and Boy*, early-1970s. (after p250)
- Figure 315.** *Tere Beskerming, (Tender Protection)*, 1974. (two after p250)
Figure 316;317;318. *Pieta*, mid-1970s. (two after p250)
- Figures 319;320;321.** *Lullaby**, mid-1980s. (three after p250)

- Figure 322.** *Mother and Child II*, 1984. (three after p250)
- Figure 323.** *Woman after Bath*, late 1950s. (opp.p251)
- Figure 324.** *The Palm*, 1960. (opp.p251)
- Figures 325;326.** *Kneeling Nude*, c. 1960 (opp.p251)
- Figure 327.** *Spiral* (Bathing Young Woman)*, 1962. (after p251)
- Figure 328.** *Water Carrier*, 1965. (after p251)
- Figure 329.** *Female Nude*, 1965. (after p251)
- Figures 330,331.** *The Fountain*, 1963. (two after p251)
- Figure 332.** *Nude with Necklace*, mid 1960s. (three after p251)
- Figure 333.** *Bathing Woman*, mid 1960s. (three after p251)
- Figure 334.** *Female Nude*, 1966. (three after p251)
- Figure 335;336.** *Woman after Bath*, late 1950s. (four after p251)
- Figure 337.** *Female Nude*, mid-1970s. (four after p251)
- Figure 338.** *Nadim Lo (As I Am)*, 1974. (four after p251)
- Figure 339;340;341.** *Vertwyfeling (Despair)*, 1974. (opp.p252)
- Figure 342** *Female Nude*, 1989. (opp.p252)
- Figure 343.** *Graduate*, mid-1960s. (after p252)
- Figures 344;345.** *The Scholar**, late-1970s. (after p252)
- Figure 346.** *Woman with Vessel*, 1957. (opp.p253)
- Figure 347.** *Zondi Carving*, 1957 (opp.p253)
- Figure 348.** *Calabash*, 1963. (opp.p253)
- Figure 349.** *Calabash*, 1963. (opp.p253)
- Figure 350.** *Base of Calabash*, 1966 (opp.p253)
- Figure 351.** *Ntombazane**, 1970. (after p253)
- Figure 352.** *Bierpot*, 1974. (after p253)
- Figure 353.** *Baca Woman*, 1974. (after p253)
- Figure 354.** *Woman with Vessel*, 1978. (two after p253)(before p254)
- Figure 355.** *Sacred Harvest*, 1982. (two after p253)
- Figure 356.** *Orpheus*, 1972. (opp.p254)
- Figure 357.** *Orpheus*, 1972. Exhibition of Sculptures, UNISA, 1974 (opp.p254)
- Figure 358.** *Michael exhibits today* (opp.p254)
- Figure 359.** *Michael Zondi and Punt Janson* pictured with *Orpheus*. (opp.p254)
- Figure 360.** *Zondi gets the recognition he deserves* *The Witness*, (opp.p254)
- Figure 361.** *Dancing Girl*, 1957. (before p255)
- Figures 362;363;364.** *Pensive Dance*, 1976. (before p255)
- Figure 365.** *Jewellery Box*, 1954. (opp.p255)
- Figure 366.** *Musician (with umakhweyane)*, 1954. (opp.p255)
- Figure 367.** *Drummer, (on Jewellery Box)*, 1954. (opp.p255)
- Figure 368.** *Rhythm*, 13 August 1965. (opp.p255)
- Figure 369.** *Drummer*, 1982. (opp.p255)
- Figure 370.** *Drummer-Boy*, 1983. (opp.p255)
- Figure 371.** *Boy with Horn*, mid 1960s. (opp.p255)
- Figure 372.** *The Dreamer* (opp.p256)
- Figure 373.** *Dreamer*, (opp.p256)
- Figures 374;375.** *Fluitspeler (Flute Player)*, 1960. (opp.p256)

Figures 376;377. *Delantaba*, 1960. (after p256)

Figure 378. *Fugitive*, 23 May 1960. (after p256)

Figure 379. *Concertina Player*, 1962. (opp.p257)

Figure 380. *Mine Worker** (or *Accordion player*), 1965. (opp.p257)

Figure 381. *Wema Blues*, 1970. (opp.p257)

Figure 382. *Umshayele* (The Musician), 1969. (opp.p258)

Figure 383. *Concertina Player*, 1980s. (opp.p258)

Figure 384. *Boy with Concertina*, 1988. (opp.p258)

Figure 385. *Imfiliji – The Musician* (Mouth Organ), 1969. (opp.p258)

Figure 386. *The Whistler*, 1970. (opp.p258)

Figure 387. *Guitar Player*, 1965. (opp.p259)

Figure 388. *Cello Player*, 1968. (opp.p259)

Figure 389. *Cello Player*, 1974. (opp.p259)

Figure 390. *Boy with Harp*, 1980. (opp.p259)

Figure 391. *Eroica* (Beethoven), 1960. (opp.p259)



Figure 1. *Kist* (mid 1950s). Dark hardwood, Perhaps Imbuia, insets Camphor. 650 x 1070 x 550.
Digital Image: Kirsten Nieser



Figure 2. *Welsh Dresser*, c. 1955. Stinkwood. 2100 x 1660 x 460. Digital Image: Kirsten Nieser
Figure 3. *Africa* c.1955 . Inset, *Welsh Dresser*. Stinkwood. 100x100. Digital Image: Kirsten Nieser
Figure 4. *Springbok* c.1955. Chevron, *Welsh Dresser*. 100x100. Digital Image: Kirsten Nieser



Letter to the Music Cabinet

3/45"	x 6"	x 7/8"	Dressed oak
6/32"	x 6"	x 7/8"	"
4/45"	x 12"	x 7/8"	Shelving
4/45"	x 12"	x 7/8"	Shelving
1/50"	x 12"	x 7/8"	Shelving
1/30"	x 12"	x 7/8"	Shelving

EDENDALE
VAKOPLEIDINGSKOOI **VOCATIONAL TRAINING SCHOOL**
 P.O. BOX 1000 NATAL

1/30" x 2" x 2" oak
 2/30" long x 24" wide & Sapele Mahogany plywood
 2/30"

Alternative list (better material)

2/45"	x 8"	x 7/8"	Dressed oak
4/32"	x 8"	x 7/8"	Dressed oak
3/45"	x 2"	x 7/8"	Oak facings
1/50"	x 2"	x 7/8"	"
1/30"	x 2"	x 7/8"	Oak (quarter)

Shelving

2/45"	x 13"	x 3/4"	nova board piece
2/45"	x 8"	x 7/8"	Shelving
2/45"	x 13"	x 3/4"	Nova board (available)
1/30"	x 13"	x 3/4"	Nova board
1/24"	x 13"	x 3/4"	Nova board

Doors

2/30"	x 22"	x 3/4"	Nova board
2/30"	long x 22"	wide	Sapele Mahogany plywood
			Back 1/2" x 3/4"

*Hinges, 1.5" diameter Chrommium plated
 plate hinge with screws.*

Figure 5. *Music Cabinet*, 1960-1961. Oak and Sapele Mahogany. c1000 x 1200 x 350. Digital Image: Kirsten Nieser
Figure 6. *Music Cabinet, Shelving*, 1960-1961. Nova board. Digital Image: Kirsten Nieser
Figure 7. *Calculations for the Music Cabinet*, in letter to Wolfgang Bodenstern, 1 Nov. 1960.



Figure 8. *Oval Table*, 1961. Wild Olive. 450 x 900 x 390. Digital Image: Kirsten Nieser



Figure 9. *Portrait Heads on Jewellery Box*, 1954. Camphor panel. Box: 150 x 335 x 205. Photograph: Kirsten Nieser . See also **Figure 382.** *Umshayele (The Musician)*, 1969



Figure 10. *Hut with Ikhothamo*, 1954. Camphor Panel. 150 x 335. Photograph: Kirsten Nieser
Figure 11. *Warrior*, 1954. Camphor Panel. 150 x 205. Photograph: Kirsten Nieser



Figure 12. *Landscape Scene I on Kist* , mid 1950s. Camphor Panel. 250 x 420.
 Photograph: Kirsten Nieser

Figure 12a. *Kist* (mid 1950s). Dark hardwood, Perhaps Imbuia, 650 x 1070 x 550. Photograph: Kirsten Nieser



Figure 13. *Landscape Scene II (Kraal Scene) on Kist* , mid 1950s. Camphor Panel. 250 x 420
 Photograph: Kirsten Nieser

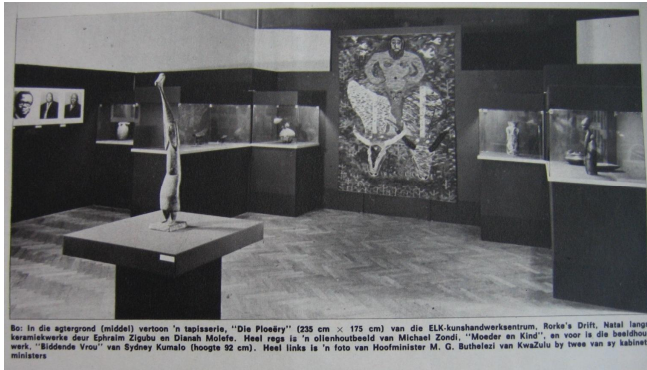
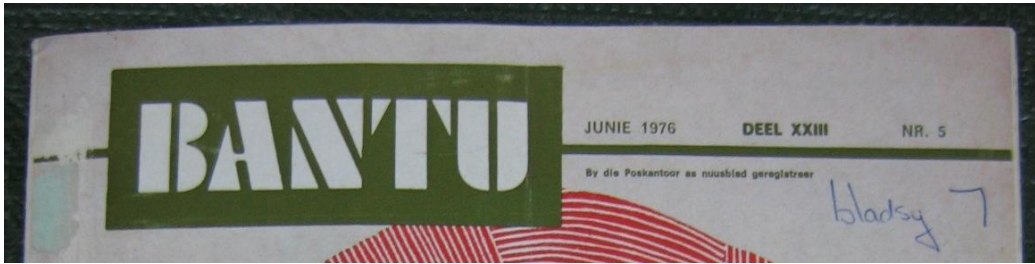


Figure 14. *Side Panel I on Kist* , mid 1950s. Camphor Panel. 250 x 380. Photograph: Kirsten Nieser

Figure 15. *Side Panel II on Kist* , mid 1950s. Camphor Panel. 250 x 380. Photograph: Kirsten Nieser



Figure 16. *Warrior and Maidens* (1975) Linocut plate. c. 220 x 170. Digital Image: Kirsten Nieser



So: In die agtergrond (middel) vertoon 'n tapisserie, "Die Ploëry" (235 cm x 175 cm) van die ELK-kunshandwerksentrum, Rorke's Drift, Natal langs kerensakevaks deur Ephraim Zigubu en Dlanah Molefe. Heel regs is 'n oliënhoutbeeld van Michael Zondi, "Moeder en Kind", en voor in die beeldhouwerk, "Biddende Vrou" van Sydney Kumalo (hoogte 92 cm). Heel links is 'n foto van Hoofminister M. G. Buthleke van KwaZulu by twee van sy kabinet-ministers



Figure 17. Exhibition Space, 'Kultur der Zulu', Völkerkunde Museum (Ethnographic Museum), Vienna in *baNtu*, June 1976, Vol. XXIII No. 5, p. 30

Figure 18. *Mother and Child*, 1975 in *baNtu*, June 1976, Vol. XXIII No. 5, p. 30 (detail)



Figure 19. *baNtu*, June 1976, Vol. XXIII No. 5, p. 4



Figure 20. *Zondi with Adam and Eve* (1959) in *baNtu*, June 1976, Vol. XXIII No. 5, p. 5

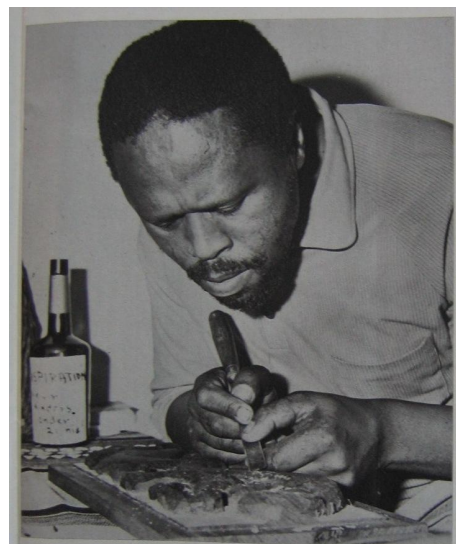


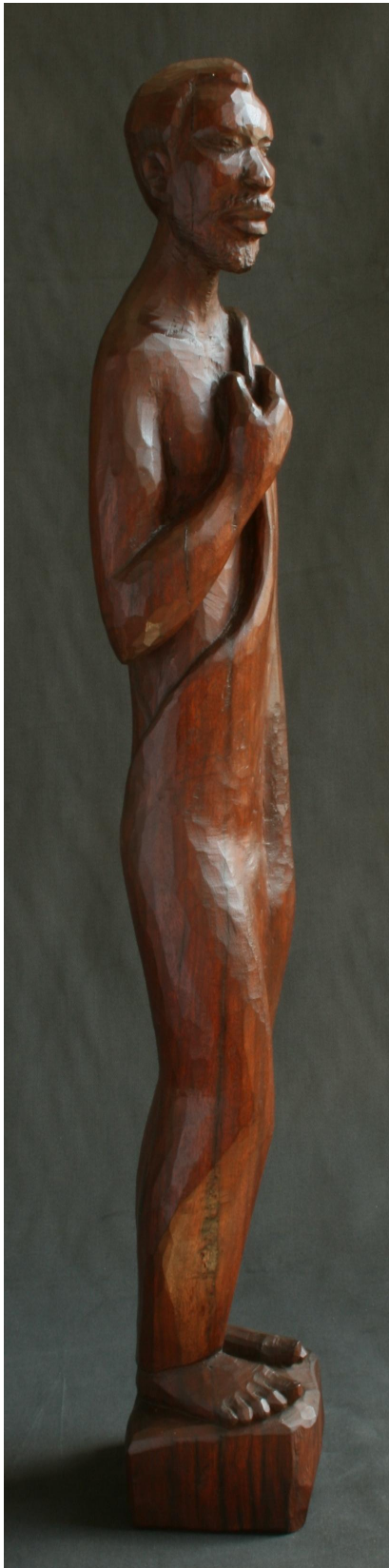
Figure 21. *Zondi carving in high relief* in *baNtu*, June 1976, Vol. XXIII No. 5, p. 7



Figure 22. J. Wolfgang Bodenstein, *Blessing* (1962)(Wolfgang Bodenstein with Michael and Mandlenkosi Zondi). Charcoal on Paper. c. 210 x 180. Digital Image: Kirsten Nieser



Figure 23. J. Wolfgang Bodenstein, *Michael and Mandlenkosi Zondi* (1962) Charcoal on Paper. c. 180 x 210. Digital Image: Kirsten Nieser



Figures 24;25;26. *Socrates* (1974) Jarrah (Eucalyptus). 785x112x110. Tatham Art Gallery Collection.
Digital Image: Kirsten Nieser

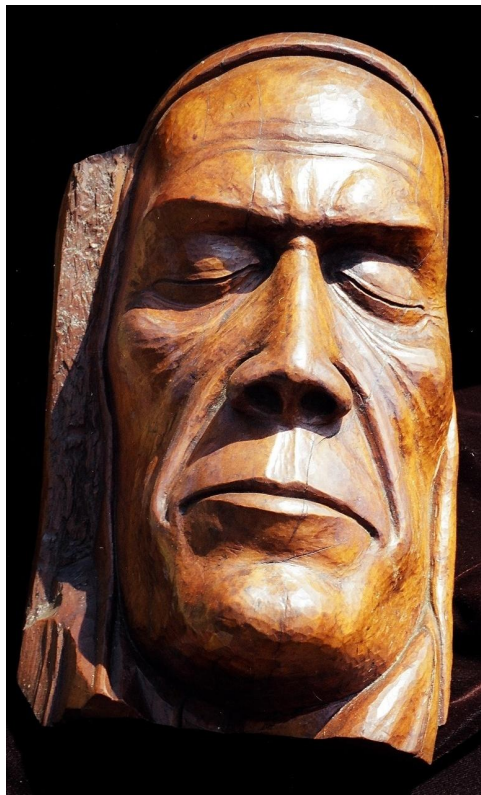


Figure 27. J. Wolfgang Bodenstern, *Johannes der Täufer (John the Baptist)* c.1961. Hardwood. c. 400 x 230. Photograph: Kirsten Nieser



Figures 28;29. J. Wolfgang Bodenstern, *Trauernde Mutter (Mourning Mother)*, 1961. Wild Olive. 250x85x100. Photograph: Kirsten Nieser



Figures 30;31;32. *Robed Woman*, 1968. Indigenous hardwood. 985 x 100 x 120. Digital Image: Kirsten Nieser
Figure 33. MZ 68 *Signature Inscription of Robed Woman*, 1968. Indigenous hardwood.
Digital Image: Kirsten Nieser

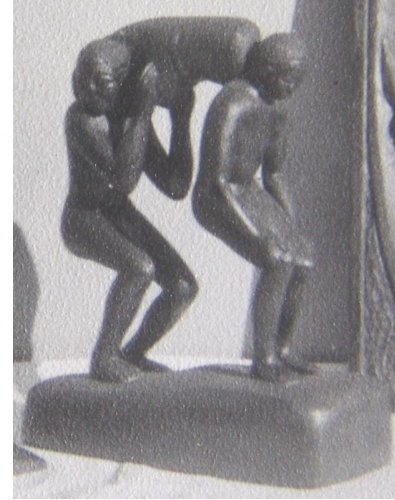


Figure 34. *Tray*, early 1950s. Perhaps teak. 510 x 340 x 30. Photograph: Kirsten Nieser

Figure 35. *Book Supports*, early 1950s. Wood and size unknown. Photograph: Jenny Eriksson

Figure 36. *Two Figurines with Load*, early 1950s. Wood and size unknown. Photograph: Jenny Eriksson



Figure 37. (at left) **Lazarus Shezi**, *Young Woman*, 1954. Wood unknown. (at right) **Michael Zondi**, *Nozizwe**, 1954. Indigenous hardwood. 150 x 65 x 85 - Plinth height 50. Photograph: Kirsten Nieser

Figure 38. *Flower Embellishment on Kist*, 1960s. Possibly Teak. C.120 x 120. Photograph: Kirsten Nieser



Figure 39. *Pair of Zulu Heads*, 1959. Perhaps teak. 200 x 120 x 100. Photograph: Kirsten Nieser
Figure 40;41. *Pair of Zulu Heads on Roundels*, 1959. Perhaps Teak. 100 x 190 x 120; Plate diameter: 300. Photograph: Kirsten Nieser



Figure 42. *Zulu Female Head on Roundel*, late-1950s. Perhaps Teak. Head:185 x 105 x 125; plate diameter 290
 Digital Image: Kirsten Nieser
Figure 43. *Female Head* late-1950s. Perhaps *umThombothi* . c.210. Digital Image: Kirsten Nieser

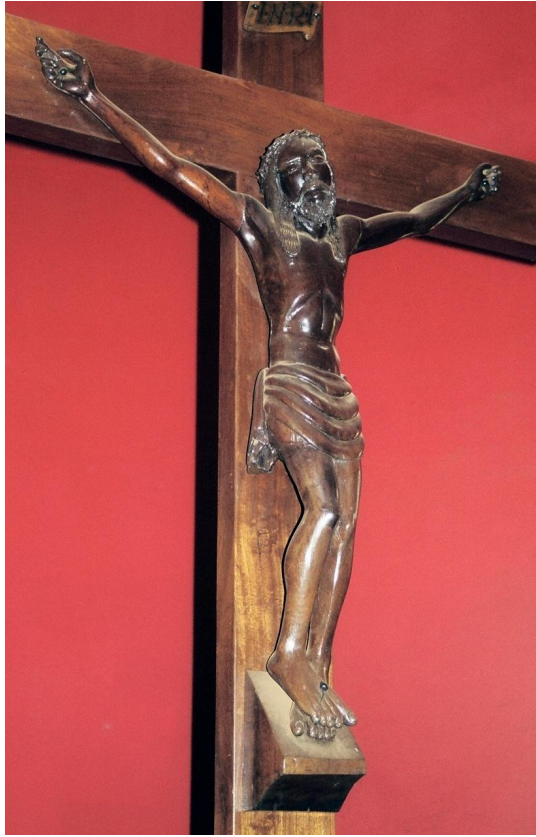
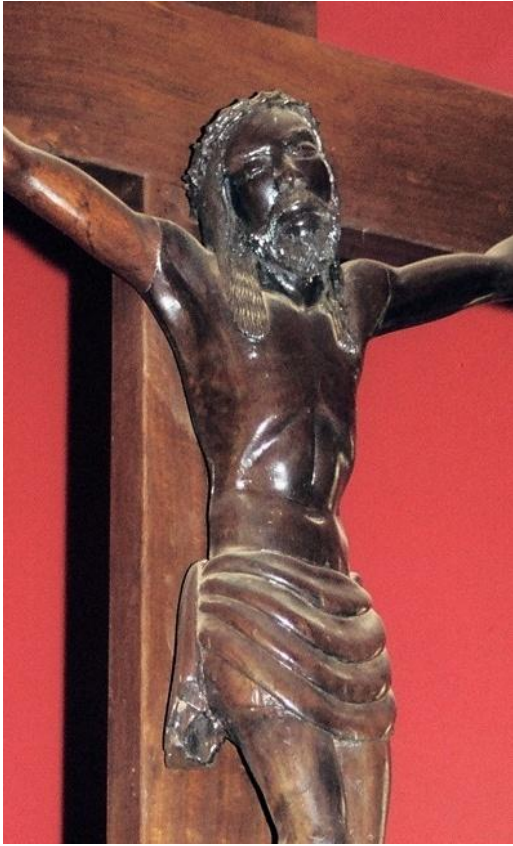


Figure 44,45 *Christ on the Cross*, c.1955. (Lutheran Church, Ceza, Northern Natal). Indigenous hardwood. Less than life-size. Photograph: Kirsten Nieser

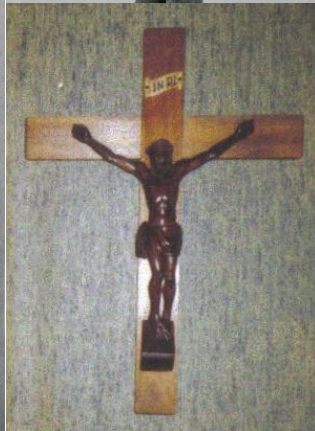
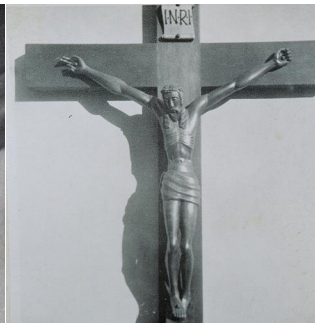


Figure 46,47. *Christ on the Cross*, mid-1950s (Location in Sweden unknown). Wood and size unknown. Photograph: Jenny Eriksson

Figure 48. *Christ on the Cross*, mid-1950s (Lutheran Church, Långselet, Northern Sweden). Wood and size unknown. Photograph: unknown

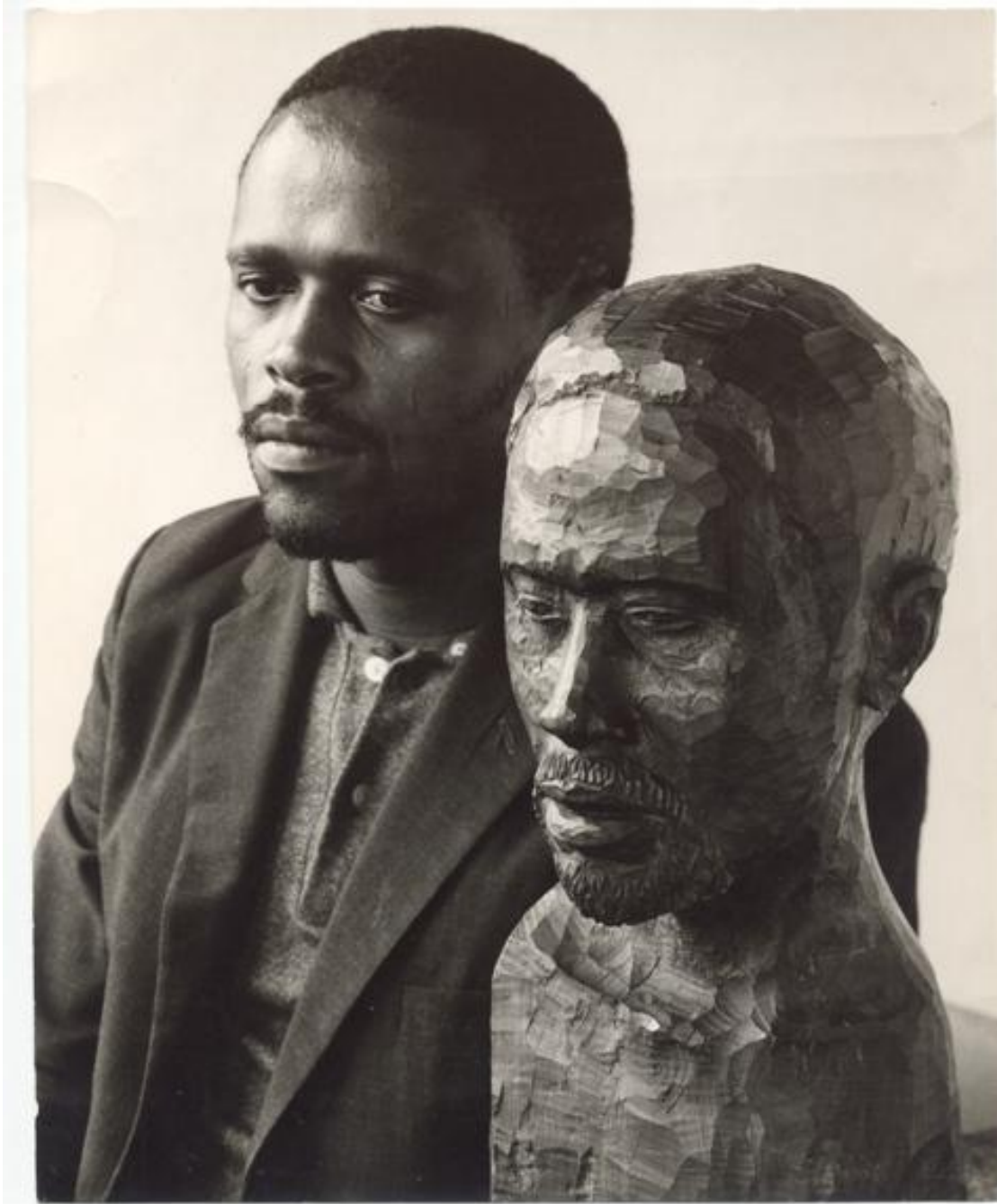


Figure 49. *Michael Zondi with his Self-Portrait of 1961. umThombothi. 200 x 112 x 70.*
Photograph: Heinrich Schlaudraff (mid-1960s). Collection: Tatham Art Gallery, Pietermaritzburg



Figure 50. Hertell. *Appelsbosch Workshop*. (Wolfgang Bodenstein (carving John the Baptist: see Fig. 27), Michael Zondi and John Hooper) c.1961. Drawing: Conte on Paper. c. 240 x 130. Photograph through glass: Kirsten Nieser



Figure 51. *The Scourge**, 23 May 1960. Pencil and ink on paper. 70 x 120. Digital Image: Kirsten Nieser



Figure 52. *Der Rächer* (The Avenger) by Ernst Barlach. Lime wood. Conceived in 1914, sculpted in 1922, and cast in bronze in 1930 (Groves, 1998:67). It was acquired in 1976 by the Barlach Museum in Hamburg-Klein Flottbek, Germany.

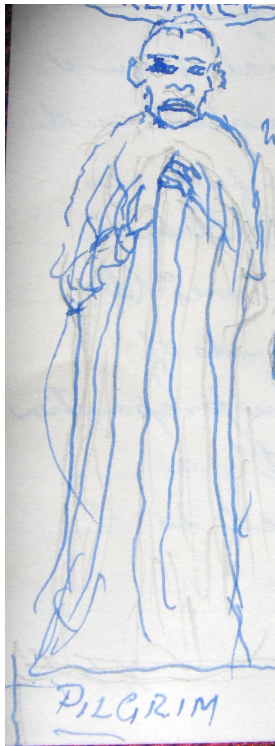


Figure 53. *The Prophet (or Pilgrim)*, 1961. *umThombothi*. 784 x 200 x 200
Photograph: Heinrich Schlaudraff.

Figure 54. *The Prophet* (Detail). Digital Image: Kirsten Nieser

Figure 55. *Pilgrim*, 23 May 1960. Pencil and ink on paper. Digital Image: Kirsten Nieser

Figure 56. *Bearded Old Man*, mid 1960s. Size unknown. Photograph: Heinrich Schlaudraff



Figure 57. *Female Torso*, mid-1960s. Wood and size unknown. Photograph: Heinrich Schlaudraff

Figure 58;58a. *Madonna*, 1969. *umThombothi*. 330 x 135 x 120. Indigenous Hardwood. Digital Image: Kirsten Nieser

Figure 59. *Female Head*, 1969. *umThombothi*. 590mm. Digital Image: Kirsten Nieser



Figure 60. *Queen*, 1969. *Jacaranda*. 350 x 175 x 270. Digital Image: Kirsten Nieser



Figure 61;61a. *Woman*, 1972. Red Ivory. 750 x 430 x 230. Digital Image : Kirsten Nieser. Collection: Oliewenhuis Art Gallery, Bloemfontein (Haenggi Foundation *Pelmama*).

Figure 62. *Tall Cloaked Woman* , 1980s. Wood and size unknown, c. 700. Photograph: Kirsten Nieser

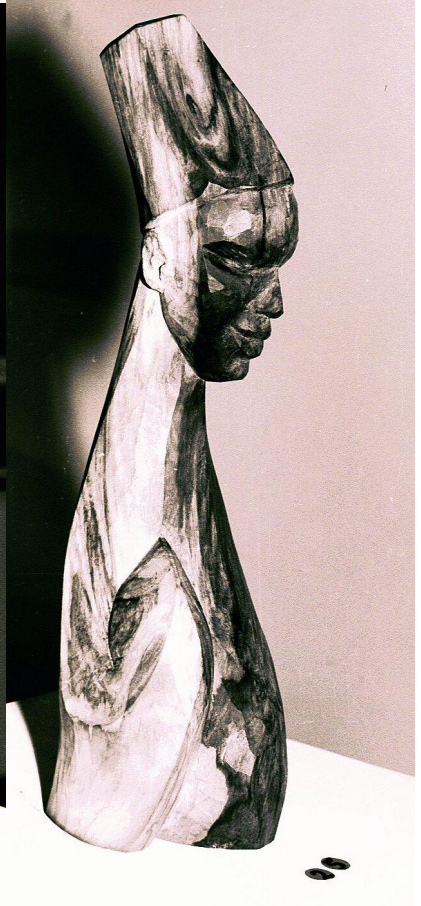
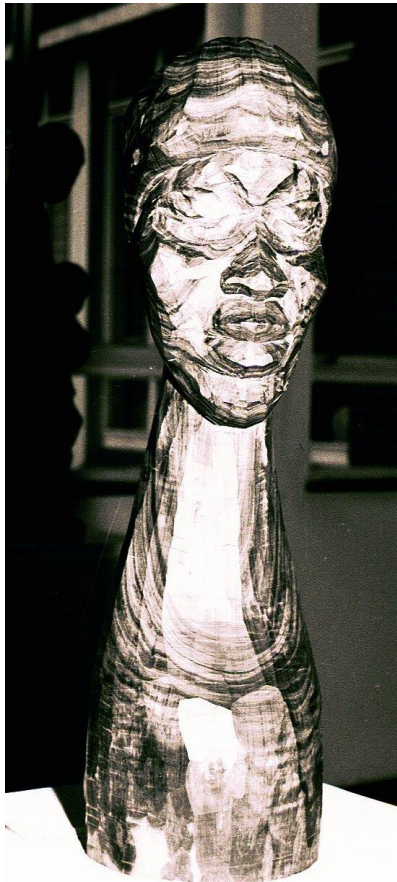


Figure 63. *Female Head*, 1973. Possibly Coastal Red Milkwood. 420 x 140 x 160. Photograph: Kirsten Nieser

Figure 64. *Zola** (Become, still, quiet), 1974. *umThombothi*. Size unknown. Photograph: Dr. Trebot Barry

Figure 65. *Shibiza**, 1974. *Matome*. Size unknown. Photograph: Dr. Trebot Barry

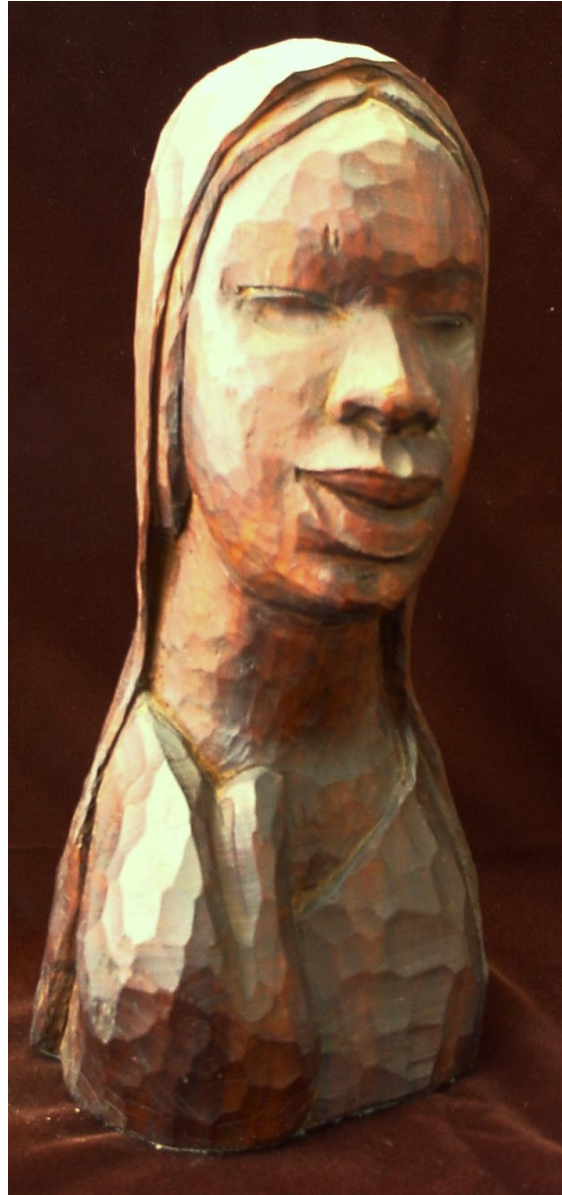


Figure 66. *Female Head*, late-1970s. Rooikrans 545 x 255 x 250. Photograph: Kirsten Nieser

Figure 67. *Female Head*, 1982 Indigenous Hardwood. 330x140x170. Photograph: Kirsten Nieser



Figure 68. *Kadebune**, 1956. probably *umThombothi*. 215 x 115 x 140. Photograph: Kirsten Nieser

Figure 69. *Cloaked Young Man (detail)*, 1970. *umThombothi*. 500 x 90 x 95 Photograph: Kirsten Nieser



Figure 70. *Young Man (with Attitude)(detail)*, 1978. Stinkwood. 625 x 190 x 115. Digital Image: Kirsten Nieser

Figure 71. *Christ*, 1973. Indigenous Hardwood 610 x 320 x 280. Photograph: Kirsten Nieser



Figure 72. *Female Head* (detail), 1972. probably *umThombothi*. 500 x 220 x 195. Photograph: Kirsten Nieser
Figure 73. *Zulu Female Head on Roundel*, late-1950s. Perhaps Teak. Head:185 x 105 x 125; plate diameter 290
Digital Image: Kirsten Nieser



Figure 74. *Graduate* (detail), mid-1960s. Wood and size unknown. Photograph: Heinrich Schlaudraff
Figure 75. *Ntombi* (Girl)*(detail) 1973. Indigenous Hardwood. 525 x 120 x 130. Photograph: Kirsten Nieser



Figure 76. *Elegance*, 1975. *umThombothi*. 705 x 130 x 165. Photograph: Kirsten Nieser
Figure 77. *isiHambi*, 1975. *umThombothi*. 850 x 125 x 200. Digital Image: Kirsten Nieser
Figure 78. *Prophet*, 1976. *umThombothi*. 610 x 130 x 170. Photograph: Kirsten Nieser



Figure 79. *Umsizigazi** (*Parish Woman*), 1974. Perhaps yellowwood. 670 x 180 x 140. Photograph: Kirsten Nieser
Figure 80. *Woman*, 1975. Probably Kiaat. 455 x 100 x 110. Photograph: Kirsten Nieser



Figure 81. *Couple* (Husband/Wife*), 1973. Indigenous Hardwood. 790x180x110. Photograph: Kirsten Nieser

Figure 82. *Madonna*, 1973. Indigenous Hardwood. 915x110x110. Photograph: Kirsten Nieser

Figure 83. *The Virgin** 1974. Indigenous Hardwoods 590x185x150. Photograph: Kirsten Nieser



Figures 84;85;86. *Commemorating Death** (of Zondiø Father, David, called *Sibembane* ,1973.
Indigenous Harwood. 430x120x110 Photograph: Kirsten Nieser



Figures 87;88. *Nude with Long Hair*, 1967. Indigenous Hardwood. 915x110x110.

Photograph: Kirsten Nieser

Figures 89;90. *Tall Female with Brush*, 1970. Probably *umThombothi*. 960 x 105 x 105

Digital Image: Kirsten Nieser



Figure 91. *Scratch my Back*, 1974. Wild Olive. 680x100x120. Photograph: Kirsten Nieser

Figure 92. *Dancing Woman*, 1974. Pypsteel. Size unknown, estimate tall. Photograph: Dr. Trebot Barry

Figure 93. *Dancing Woman*, 1974. Pypsteel. Size unknown, estimate tall. Photograph: Prof. Johan van Wyk

Figure 94. *The Raionbow*, 1974. Mvuli (Iriko). Size unknown, estimate tall. Photograph: Dr. Trebot Barry



Figure 95. *Scholar*, late-1970s. umThombothi. 790 x 140 x 140 (Base 80mm) Photograph: Kirsten Nieser

Figure 96. *The Young Prophet*, 1977. umThombothi. 770 x 100 x 105. Photograph: Kirsten Nieser

Figure 97. *Bearded Man*, 1978. Wood and size unknown. Photograph: Shirley Deane (1978)

Figure 98. *Zondi carving Bearded Man*, 1978. Photograph: Shirley Deane (1978)



Figure 99. Eckhard Bodenstein. *Geometrical Head*, 1970. Indigenous Hardwood. Wood and size unknown. Photograph: Eckhard Bodenstein (digitally copied by Kirsten Nieser)

Figure 100. *Smiling Woman*, 1970. *umThombothi* . 290 x 110 x 190. Digital Image: Kirsten Nieser



Figure 101. *Woman*, 1974/75. Black Ivory. 390 x 120 x 90. Photograph: Kirsten Nieser

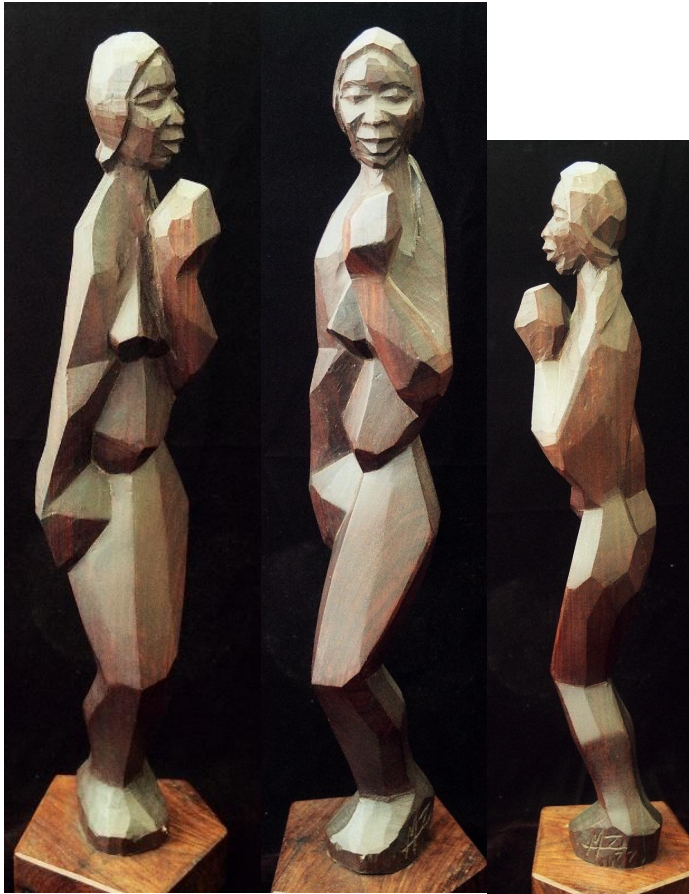
Figure 102. *Challenge*, 1975. Hardekool. 670 x 90 x 140; base 60 x 180 x 180. Photograph: Kirsten Nieser

Figure 103. *Robed Woman*, 1970s. umThombothi. 430 x 80 x 120. Photograph: Kirsten Nieser



Figures 104;105. *Head*, 1977. Ironwood. 310 x 120 x 140. Digital Image: Kirsten Nieser

Figures 106;107 *Female Head*, undated (c. 1977/78. *Rooi puitjie* (Australian Acacia) 450 x 190 x 220. Photograph: Kirsten Nieser



Figures 108;109;110. *Standing Woman*, 1977. Zimbabwean hardwood. 650x130x110..Photograph: Kirsten Nieser
Figure 111. *Prayer*, 1978. *Rooi puitjie* (Australian Acacia) 350 x 95 x 180. Photograph: Kirsten Nieser



Figures 112;113;114. *Young Man with Cape*, 1978. -Djombaø railway sleeper. 430 x 180 x 160
Photograph: Kirsten Nieser



Figures 115;116. *Serene**, 1979. Indigenous Hardwood. 435 x 65 x 80 (Base 30). Photograph: Kirsten Nieser
Figure 117. *Primadonna**, 1979. Stinkwood. 360 x 90 x 85. Photograph: Kirsten Nieser



Figure 118. *Mother and Child*, late-1970s. Indigenous Hardwood from sleeper. 280 x 110 x 85.
Digital Image: Kirsten Nieser

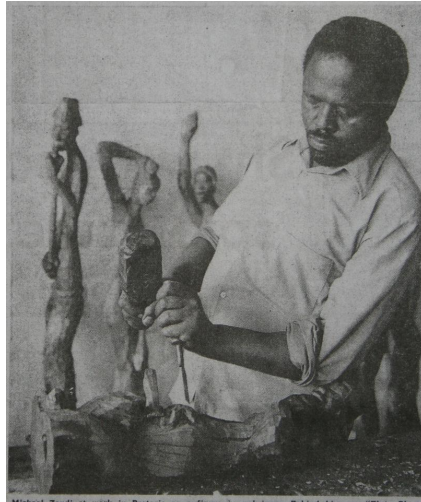
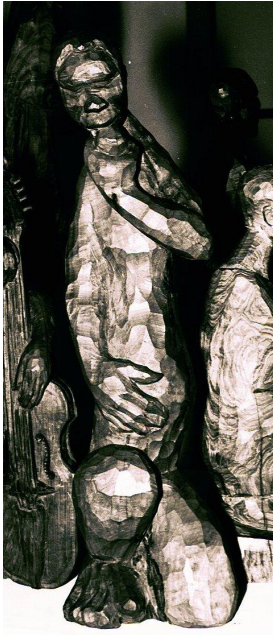
Figure 119. *Tokoloshi Says it with Flowers**, 1982. Indigenous Cape Hardwood. C. 190mm.
Digital Image: Kirsten Nieser



Figures 120;121. *Boy with a Dog*, 1983. Stinkwood. 315 x 210 x 210. Digital Image: Kirsten Nieser



Figures 122;123. *Tit Bit**, 1974. *Hardekool*. 555 x 120 x 115 Digital Image: Kirsten Niese
Figure 124. *Thokoza **, 1974. Mahogany. Size unknown. Digital Image: Kirsten Niese



Michael Zondi at work in Pretoria on a figure in red ivory. Behind him are "Dancing Woman" and "Victory."



Figure 125. *Apple Thief* *,1974.Red Ivory. Size unknown, c. 600mm. Photograph : Dr. Trebot Barry

Figure 126. *Apple Thief* *,1974. Photograph: Prof. Johan van Wyk

Figure 127. Zondi carving *Apple Thief* , 1974 .

Photograph probably by Prof. Johan van Wyk, published in *The Star* 2 November 1974

Figure 128: Zondi carving *Apple Thief* , 1974. Photograph: Prof. Johan van Wyk



Figure 129. *Laughing Duck** (or *Madadeni Duck**), 1965. Wood and size unknown. Photograph: Heinrich Schlaudraff

Figure 130. *Happy Homecoming*, 1974. Wild Willow. 995 x 200 (x base 180)mm. Digital Images: Kirsten Nieser



Figures 131;132. *Happy Homecoming*, 1974 (details). Digital Images: Kirsten Nieser



Figure 133. *Contortionist* , 1975. Stinkwood. 200x260x130. Photograph: Kirsten Nieser



Figures 134,135. *Pain* , 1982. Indigenous hardwood from the Cape. 270x260x190
Digital Images: Kirsten Nieser . Collection: Tatham Art Gallery



Figure 136;137. *Sacred Harvest*, acq. 1981. *Igquba* . 560x115x140. Digital Image: Kirsten Nieser.
Collection Tatham Art Gallery

Figure 138:139. *Rural Church Woman*, 1979. *umThombothi*. C. 850mm. Digital Image: Kirsten Nieser

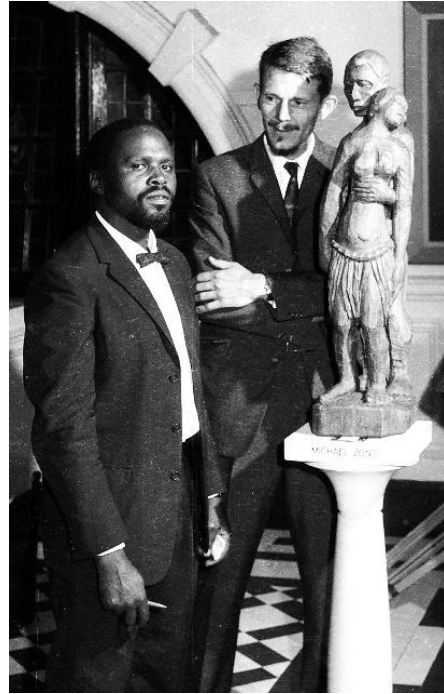
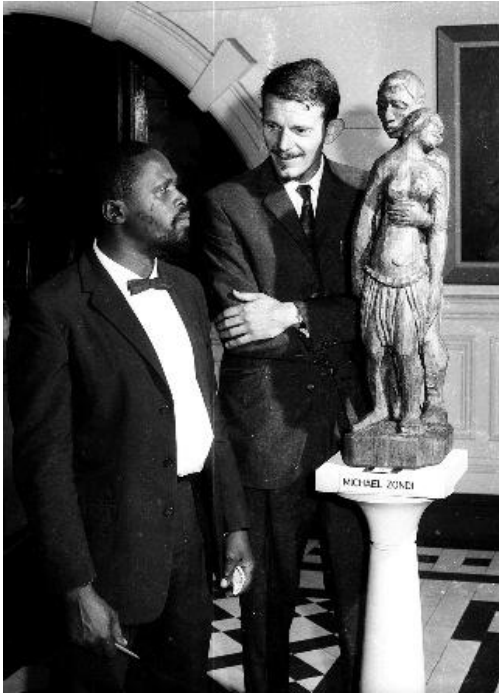


Figure 140. *Twisted Woman* , 1980s. Wild Olive. 1150 x c.180. Digital Image: Kirsten Nieser.

Figure 141;142. *Woman*, 1980s. Wild Olive. Indigenous hardwood, touched by fire. 900 x 200 x 250.
Digital Image: Kirsten Nieser

Figure 143. *Fragment*, 1980s. Indigenous hardwood. 690 x 190 x 175. Digital Image: Kirsten Nieser.

Exhibition of Sculpture by Michael Zondi
presented by
The Durban Art Gallery
26th August to 13th September 1965



Figures 144;145. Opening Ceremony, Durban Art Gallery. Michael Zondi and Wolfgang Bodenstein, pictured with *Adam and Eve* (1965)(Fig.?) 860mm
Photographs: possibly Agnes Bodenstein (35mm film)



Figure 146. Michael Zondi with Madame Z. Wisznicka-Kleczynska, curator of the Durban Art Gallery, pictured with *NjiloNjilo**(1965)(Fig.? opp. p ?). Photographs: possibly Agnes Bodenstein (35mm film)
Figure 147. Unidentified film makers recording the opening
Photographs: possibly Agnes Bodenstein (35mm film)



Figure 148. *Joy of Living** (or Felix), 1965. 405 x 100 x 160. Digital Image: Kirsten Nieser

Figure 149. *De Kleine Johannes**, 1969. 510x125x110. Photograph: Kirsten Nieser

Figure 150. *Umfana Isigangi** (Mischievous Boy), 1969. 370x115x105. Photograph: Kirsten Nieser



Figure 151. *Poor Boy**(1960s). 430x120x110. Digital Image: Lorraine Harrison

Figure 152. *Boy with Jacket* (1960s). c 400. Photograph: Kirsten Nieser

Figure 153. *Boy with Jacket* (1980s). c 400. Photograph: Kirsten Nieser



Figure 154. *Johannes (Bodenstein) and Michael Zondi.* 1970s. c120mm. Digital Image: Kirsten Nieser



Figure 155. *Zondi carving Adam and Eve*, mid-1960s. Photograph: Heinrich Schlaudraff



Figure 156. *Zondi carving a Couple*, mid-1960s. Photograph: Heinrich Schlaudraff



Figure 157. *Forest Queen*, 1974. Hardekool . Size unknown Photograph: Wolfgang Bodenstein
Figure 158. *Forest Queen*, 1974. Photograph: Prof. Johan van Wyk



Figure 159. *Forest Queen*, as shown in the UNISA Exhibition of 1974, Exhibit No. 5
Photograph: Dr. Trebot Barry



Figure 160. *Togetherness**, (or *Love in Bloom*) 1964, umThombothi. c. 200 x 300.

Photograph: Johann van Wyk

Figure 161. *Wedding Couple*, 1972. Stinkwood. 210 x 300 x 20. Photograph: Kirsten Nieser



Figure 162. *Handshake on Kist*, 1960s. Possibly Teak. 1000 x 525 x 520 (Oval 405 x 215).

Photograph: Kirsten Nieser

Figure 163. *Give and Take**, 1978. Pypsteel. 125 x 310 x 200. Photograph: Kirsten Nieser



Figure 164. *Handshakes* (back panels on kist), mid-1950s. Camphor. 250 x 420 each. Photograph: Kirsten Nieser

Figure 165. *Insignia of Inkatha ka Zulu*, 1925. UKUHLANGANA KU NGAMANDHLA (Unity is Strength) (Cope, 1993 :xiv)





Figure 166. *Landscape*, 1955, possibly teak. 300x400x25. Digital Image: Kirsten Nieser



Figure 167. *Warrior*, early 1950s. Wood unknown. c. 250mm. Photograph: Jenny Eriksson

Figure 168. *Khandamdevu**, 1978, early 1950s. Dark, indigenous wood. Diameter c. 250mm. Photograph: Kirsten Nieser

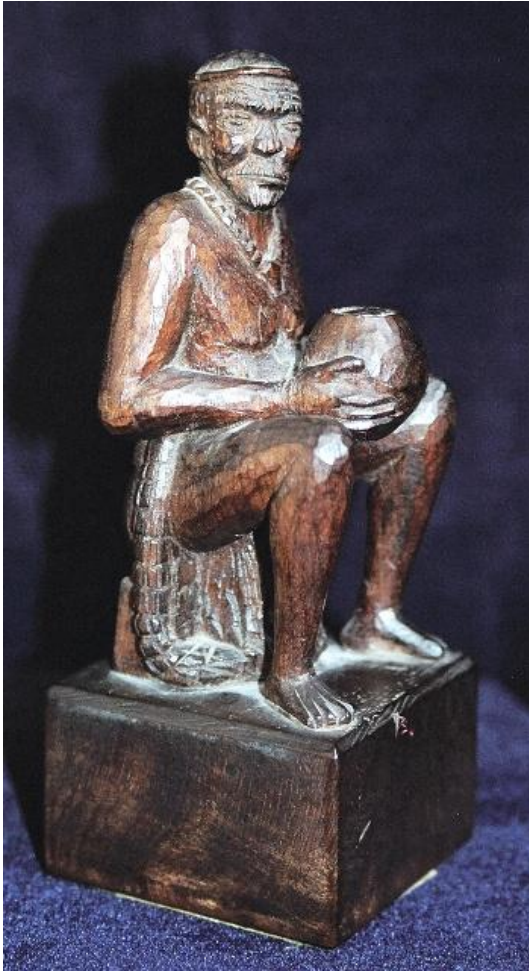


Figure 169. *Zulu Patriarch*, 1954. *umThombothi*. 115 x 40 x 50. Photograph: Kirsten Nieser



Figure 170. *Girl Figurine*, c.1954. Indigenous hardwood. 115 x 40 x 50. Photograph: Kirsten Nieser

Figure 171. *Girl with Mielie*, c.1954. Indigenous hardwood. 115 x 40 x 50. Photograph: Kirsten Nieser

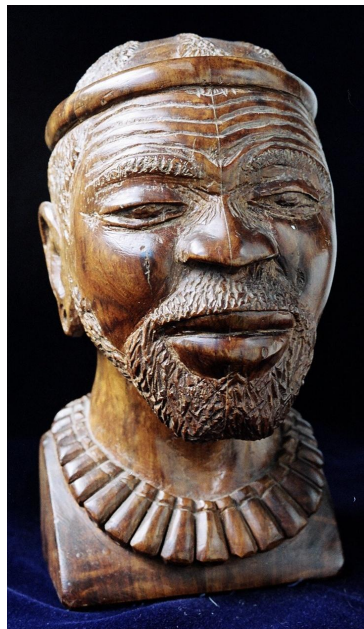


Figure 172. *Nobubele**, 1956. Probably *umThombothi*. 230 x 135 x 125. Photograph: Kirsten Nieser
Figure 173. *Kadebune**, 1956. probably *umThombothi*. 215 x 115 x 140. Photograph: Kirsten Nieser
Figure 174. *Nobubele** and *Kadebune**



Figure 175. *Nobuhle**, 1956. *umThombothi*. 230 x 135 x 125. Photograph: Kirsten Nieser
Figure 176. *Dancing Woman I*, 1960. Possibly *umThombothi*. 365 x 80 x 90. Photograph: Kirsten Nieser
Figure 177. *Dancing Woman II*, 1960. Possibly *umThombothi*. 335 x 80 x 105. Photograph: Kirsten Nieser

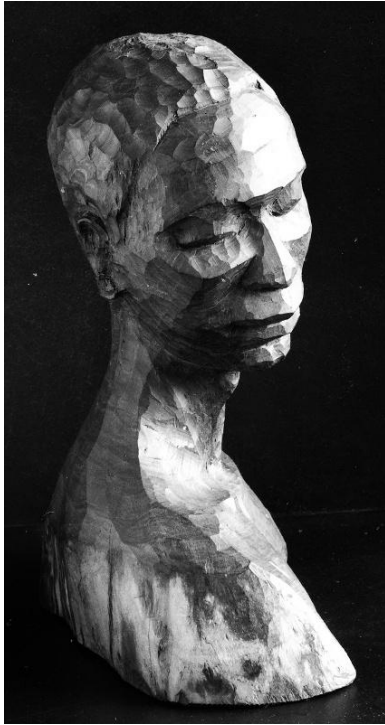


Figure 178. *Shaka * (or Shaka Zulu)*, 1965. umThombothi. 355mm. Photograph: Jonathan Strauss
Figure 179. *Shaka * (or Shaka Zulu)*, 1965. umThombothi. 355mm. Photograph: Jonathan Strauss



Figure 180. *Shaka Between Good and Evil**, c. mid-1960s. Indigenous Hardwood. 340 x 240 x 100. Photograph: Kirsten Nieser
Figure 181. *Shaka Between Good and Evil**, c. mid-1960s. Digital Image: Heinrich Schlaudraff
Figure 182. *The Emperor**, 1969. Red Ivory. c.350 mm. Digital Image: Kirsten Nieser

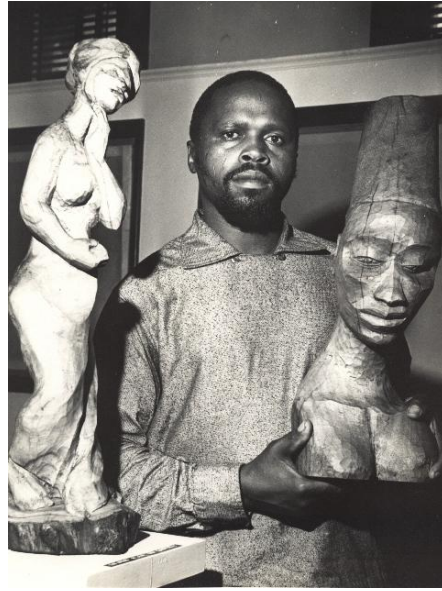


Figure 183. *Shaka's Mother**, or *Nomngqovu** (Woman in her Prime), 1965. Red Ivory. 560 x 210 x 230.

Photograph: Kirsten Nieser

Figure 184. Photograph: Heinrich Schlaudraff

Figure 185. *Michael Zondi with NjiloNjilo* (see Fig.182) and *Nomngqovu*, 1965.

Photograph: Heinrich Schlaudraff, published in the *Daily News*, 26 August 1965



Figure 186. *Mnkabayi kaSenzangakhona, Keeper of the isiGodlo*, 1965. Probably *umThombothi*. C. 330mm.

Photograph: Kirsten Nieser.

Figure 187. *NjiloNjilo** (or *Nongqawuse*, 1965. Camphor. 660mm. Photograph: Heinrich Schlaudraff

Figure 188. *Michael Zondi with Madame Z. Wisznicka-Kleczynska*, curator of the Durban Art Gallery, pictured with *NjiloNjilo**. Photograph: possibly Agnes Bodenstein (35mm film)



Figure 189. *Queen of Sheba* , 1965. *umThombothi* . 914mm. Photograph: Heinrich Schlaudraff
Figure 190. *Queen of Sheba* , 1965. *umThombothi* . 914mm. Photograph: Kirsten Nieser



Figures 191;192. *Kwasa (It Dawned)*, 1966. *umThombothi*. 460x240x160. Photograph: Kirsten Nieser
Figure 193. *Queen of Sheba* , 1966, (exhibit No. 8 -NFS) in *Exhibition of African Art and Crafts* at Pabros Theatre, West Street Durban, April 1966 presented by the African Arts Centre
 Photographer unknown. Campbell Archive : Jo Thorpe AAC Collection Zondi (29)



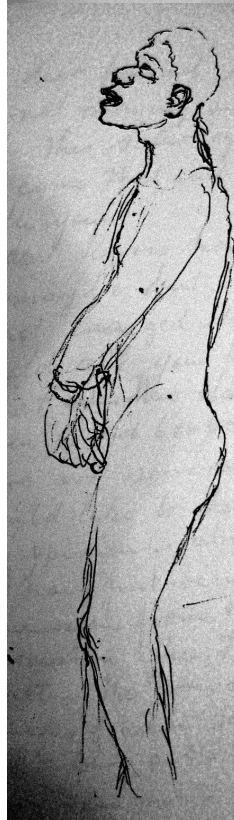
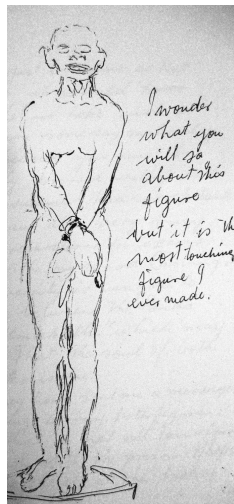
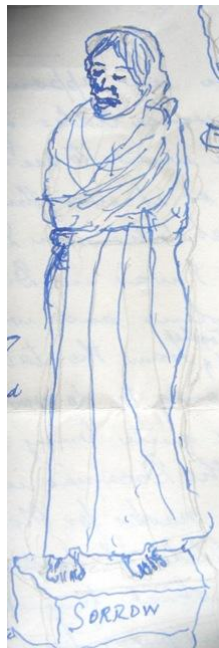


Figure 194. *Sorrowful Mother**, 1960. Possibly Kiaat. 605 x 120 x 100. Photograph: Kirsten Nieser

Figure 195. *Sorrow **, 23 May 1960. Pencil and fountain pen on paper, 130mm.

Figures 196;197. *The Prisoner of Hope**, 8 Oct. 1959. Ballpoint sketches on lime-green paper. 200mm

Figure 198. *Invisible Bonds**, 1960. Possibly kiaat. 640 x100 x 95. Photograph: Kirsten Nieser



Figure 199. *Disappointment*, 20 March 1960. Ballpoint on paper. 137 x 40

Figure 200. *Bitterness*, 20 March 1960. Ballpoint on paper. 160 x 47. Digital image: Kirsten Nieser

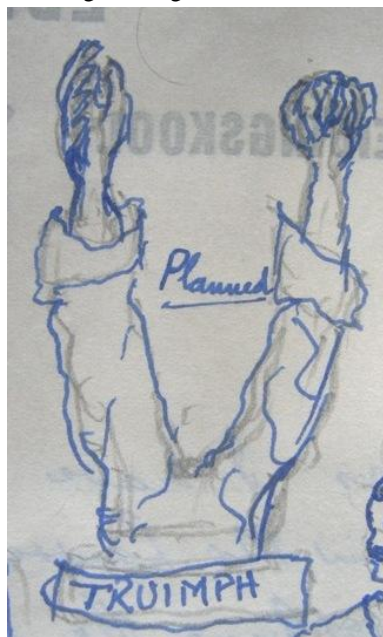


Figure 201. *Broken Heart*, 23 May 1960. Pencil and ink on paper. 19 x 75. Digital image: Kirsten Nieser

Figure 202. *The Scourge**, 23 May 1960. Pencil and ink on paper. 70 x 120. Digital image: Kirsten Nieser

Figure 203. *Hands of Triumph** (sic.), 23 May 1960. Pencil and ink on paper. 64 x 35. Digital image: Kirsten Nieser



Figure 204. *Moses*, 1959. Wild Olive., 200x120x190. Digital Image : Kirsten Nieser.
Collection: Tatham Art Gallery

Figure 205. *Moses*, 1959. Photograph: Heinrich Schlaudraff



Figure 206. *Michael Zondi and Moses*, with Jim and Jo Thorpe (centre) and Wolfgang Bodenstein (right) Photograph: unknown (Killie Campbell Archive: the African Art Centre File)

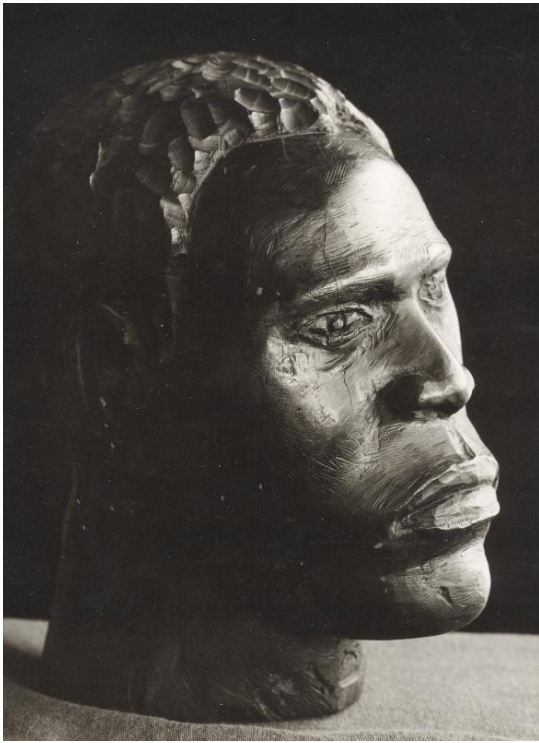


Figure 207. *Portrait of a Young leader (or Othello)*, 1960. Wild Olive., 200x220x145.
Photograph: Heinrich Schlaudraff. Collection: Tatham Art Gallery

Figure 208. *Portrait of a Young leader (or Othello)*, 1960. Digital Image : Kirsten Nieser.



Figure 209. *Portrait of a Young leader (or Othello)*, 1960. Digital Image : Kirsten Nieser.



Figure 210. *Prophet*, 1974. Indigenous Hardwood, 1110 x 300 x 260. Digital Image: Kirsten Nieser
Figure 211. *Prophet*, 1974. Digital Image : Kirsten Nieser.



Figure 212. *Stille Gebed** (*Quiet Prayer*)(unfinished) 1974. *umShamfuthi*, (*Afzelia quanzensis* Welw.).
Size unknown. Photograph: Prof. Johan van Wyk
Figure 213. *Stille Gebed*, 1974. Photograph: Dr. Trebot Barry



Figures 214;215;216. *Old Man Meditating**, 1974. *Chamfuti*, 520x124x200.
Digital Image: Kirsten Nieser



Figure 217;218;219;220. *isiHambi (or Pilgrim or Solitude)*, 1975. *umThombothi*. 850 x 125 x 200.
Digital Images: Kirsten Nieser



Figure 221;222;223. *Die Eensame** (*The Lonely One*) (or *Looking Back**, or *Communication with God**), 1975. Wild Olive. 625x110x120 . Digital Images: Kirsten Nieser



Figure 224. *Triumph (or Victory)*, 1974. Wild Olive. Size unknown, very tall. Photograph: Dr. Trebot Barry
Figure 225. *Triumph (or Victory)*, 1974. Photograph: Prof. Johan van Wyk
Figures 226;227;228. *Triumph (Victory or Liberty)* 800x170x240. Photographs: Kirsten Nieser



Figure 229. *Bearded Male Head*, mid-1960s. Wood and size unknown. Photograph: Heinrich Schlaudraff

Figure 230. *Head of a Prophet*, 1977. Hardekool. 360 x 120 x 200. Digital Image: Kirsten Nieser
Collection: Tatham Art Gallery



Figure 231. *Head of a Prophet I*, 1980s. Indigenous Hardwood. c.500mm. Photograph: Kirsten Nieser
Figure 232. *Head of a Prophet II*, 1980s. Indigenous Hardwood. c.500mm. Photograph: Kirsten Nieser



Figure 233. *Male Torso*, 1980s. Wood and size unknown. c.500. Photograph: Kirsten Nieser

Figures 234;235. *Undoing Shackles*, 1980. *umThombothi*. 670 x 150 x 120. Photograph: Kirsten Nieser

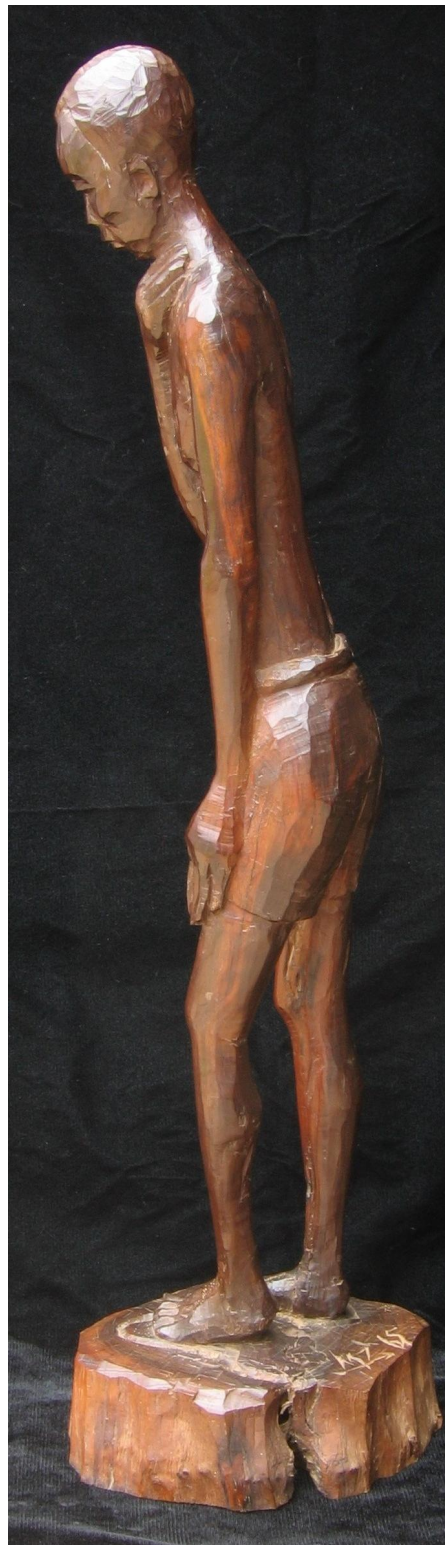


Figure 236. *The Prodigal Son*, 1965. umThombothi. 690 x 95 x 150. Digital Image: Kirsten Nieser
Figures 237;238. *The Prodigal Son*, 1965. Digital Images: Kirsten Nieser



Figure 239. *Couple in front of Cross*, 1961. Bhekuzulu Lutheran Church, Vryheid. Cement Sgraffit. 1900 x 2440mm. Photograph: Jenny Eriksson (early 1960s)



Figures 240. *Zondi's Signature 'MZ '61'*; *Nomfundo Zondi-Molefe* in front of mural; Bhekuzulu Lutheran Church;



Figure 241. *Adam and Eve*, 1959. Wild Olive. 200x220x145. Photograph: Kirsten Nieser
Figure 242. *Zondi with Adam and Eve*, c. mid 1960s Photograph: Heinrich Schlaudraff



Figure 243. *Adam and Eve*, mid 1960s. Size and wood unknown. Photograph: Heinrich Schlaudraff



Figure 244. *Adam and Eve*, 1965. Indian Teak. 860 mm. Photograph: Heinrich Schlaudraff

Figure 245. *Adam and Eve*, 1965. Indian Teak. 860 mm. Photograph: Kirsten Nieser

Figure 246. *Adam and Eve* (detail), 1965. Indian Teak. 860 mm. Photograph: Heinrich Schlaudraff



Figure 247. *Zondi with Adam and Eve*, 1965. Indian Teak. 860 mm. Photograph: Heinrich Schlaudraff



Figure 248. *Lot's Wife*, 1959. umShamfuthi, (Afzelia quanzensis Welw.). 670 x 200 x 130.
Photograph: Heinrich Schlaudraff

Figure 249. *Lot's Wife*, 1959. Digital Image: Kirsten Nieser.

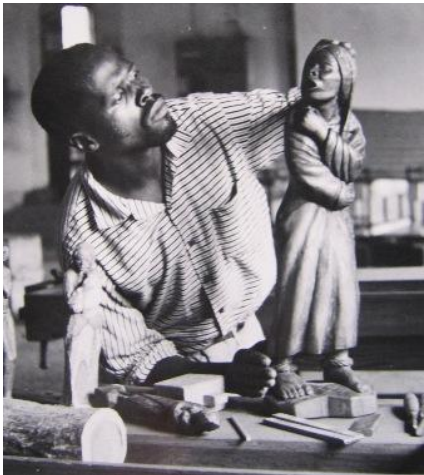
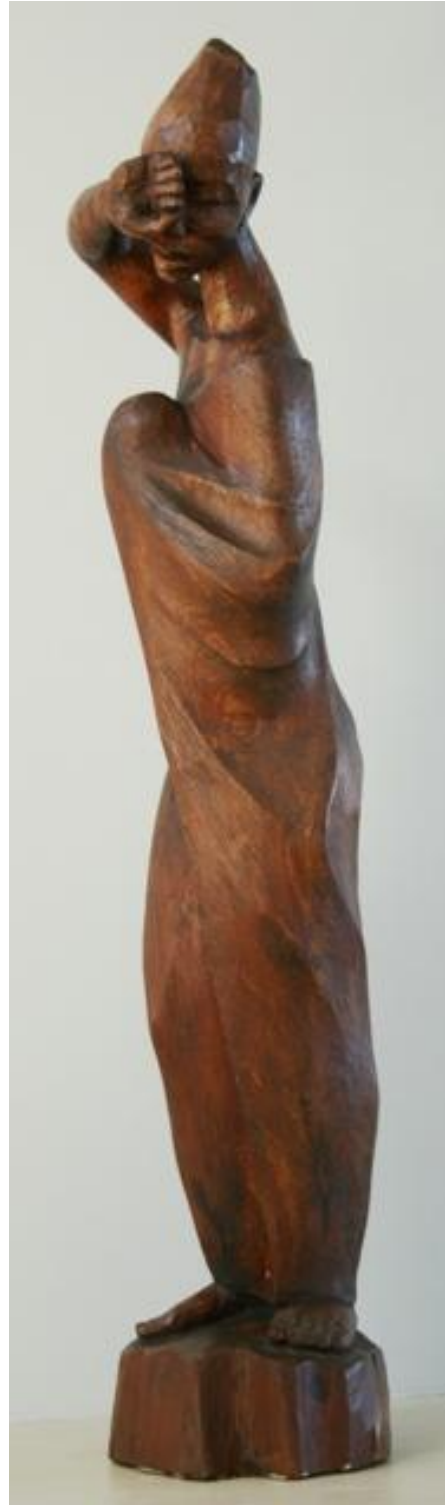


Figure 250. *Zondi with Lot's Wife*, c. 1960. Possibly in workshop at Edendale Vocational School, Pietermaritzburg.
Photographer unknown. Collection: Kay Nixon Archive

Figure 251. *Lot's Wife* (detail), 1959. umShamfuthi, (Afzelia quanzensis Welw.). 670 x 200 x 130.
Digital Image: Kirsten Nieser.



Figures 252;253;254;255. *Rachel*, 1963. Red Ivory. 945 x 190 x 170. Digital Image: Kirsten Nieser

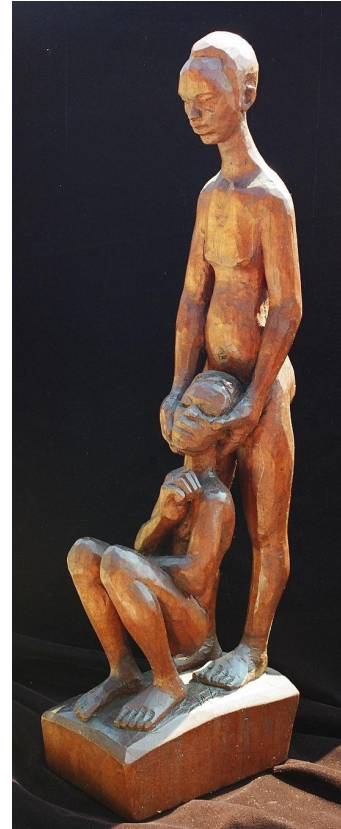
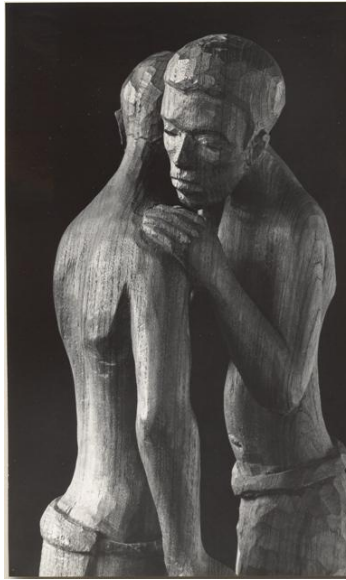
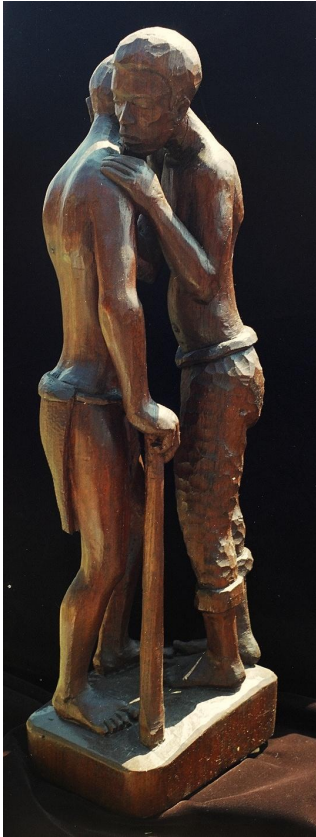


Figure 256. *Reunion (or Reconciliation)*, 1964. Indian Teak. 650x205x150. Photograph: Kirsten Nieser

Figure 257. *Reunion (or Reconciliation)*, 1964. Indian Teak. 650x205x150.

Photograph: Heinrich Schlaudraff

Figure 258. *Forbidden Friendship (or David and Jonathan)* 1964. Indian Teak. 510 x 90 x 170.

Digital Image: Kirsten Nieser

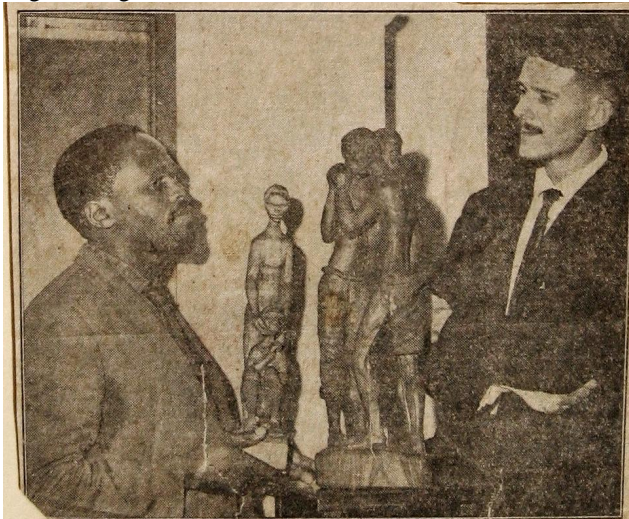


Figure 259. Zondi and Wolfgang Bodenstern pictured with *Reunion* and *Forbidden Friendship*, 1964. Photograph: *Daily News*, published on 21 February 1964, PRESENTATION TO HOSPITALø

Hospital Chapel Appelsbosch (CSM)

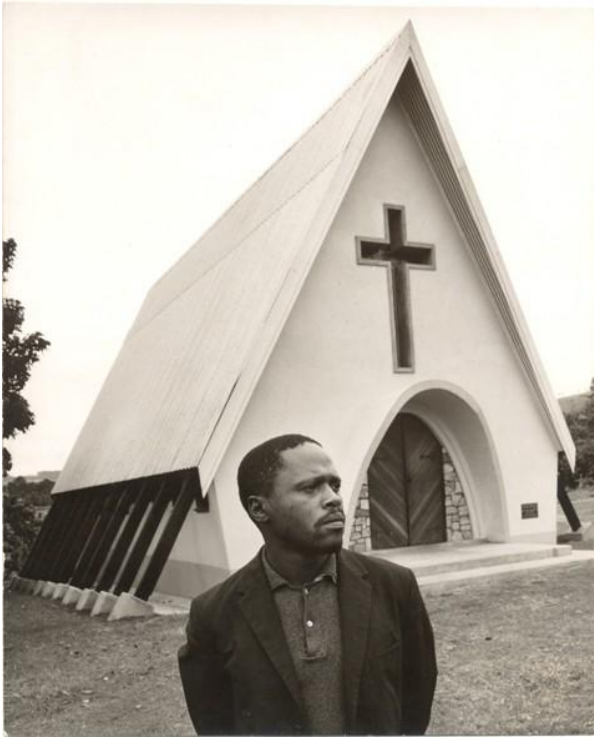


Figure 260. *Hospital Chapel*, Appelsbosch CSM, 1964. Photograph: Heinrich Schlaudraff

Figure 261. *Hospital Chapel Interior*, Pews, Appelsbosch CSM, 1964. Photograph: Heinrich Schlaudraff

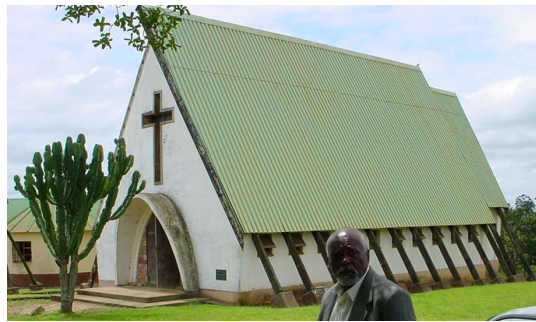


Figure 262. *Hospital Chapel, Candelabra.*, Appelsbosch CSM, 1964. Photograph: Heinrich Schlaudraff

Figure 263. *Hospital Chapel*, Appelsbosch CSM, 2002 with Michael Zondi. Photograph: Kirsten Nieser

Figure 264. *Hospital Chapel, Interior During Service*, Appelsbosch CSM. Date and photographer unknown

Hospital Chapel Appelsbosch (CSM)

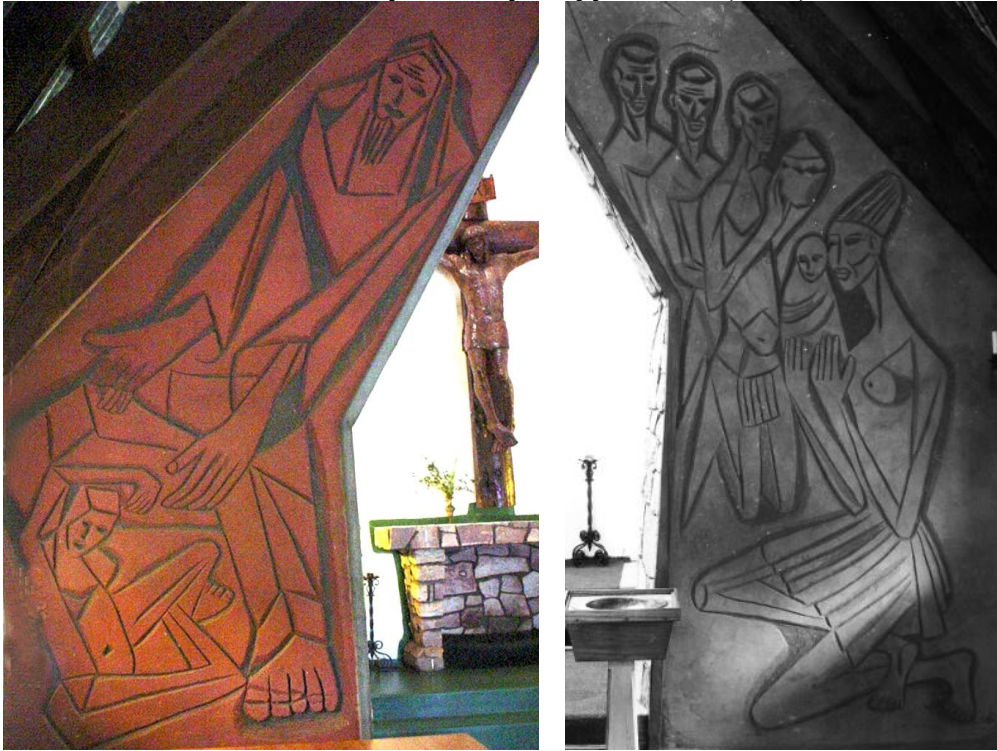


Figure 265. *Prophet and Child*, Cement Sgraffito, c 3500mm. Digital image: Kirsten Nieser

Figure 266. Eric Ngcobo, *Nativity Scene* (Mother and Child and Three Men), Cement Sgraffito, c. 3500mm
Photograph: Heinrich Schlaudraff



Figure 267. *Font Design*. Ballpoint pen on paper . (2 pages, 210 x 125 each)

Figure 268. *Baptismal Font* - OKHOLWAYO-ABAPHATHIZWE + OYAKU-SINISWA, (The one who believes and is baptised will be saved). Copper, c. 400mm. Photograph (detail): Heinrich Schlaudraff

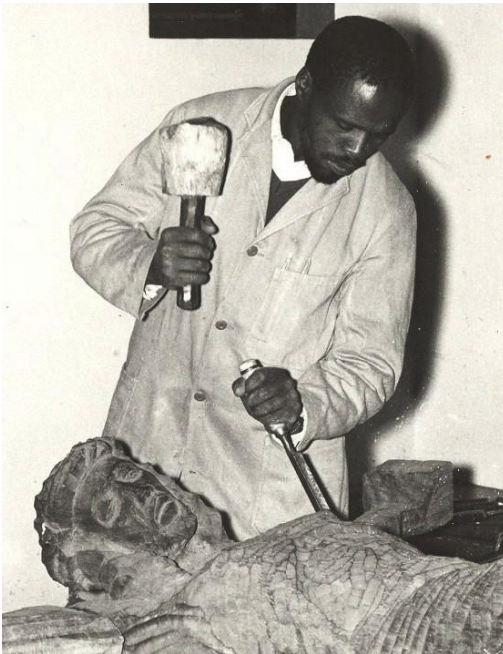
Figure 269. *Baptismal Font Stand*, Wood, c. 1100mm. Photograph (detail): Heinrich Schlaudraff



Figures 270;271;272

Christ on the Cross, Hospital Chapel, Appelsbosch Mission, 1964. Blackwood. Lifesize.

Photographs: Heinrich Schlaudraff



Michael Zondi sculpting Christ on the Cross, Hospital Chapel, Appelsbosch Mission, 1964

Figure 273. Photographer: not known

Figure 274. Photographer: *Daily News*

Figure 275. Photograph: *The Condenser*, Vol. 5 No. 4, Dec. 1966 p 14



Figure 276. *The Publican* 1965, Stinkwood, 508mm. Photograph: Heinrich Schlaudraff

Figure 277. *The Publican* (detail) 1965, Stinkwood, 508mm. Photograph: Heinrich Schlaudraff



Figure 278. Michael Zondi with *The Publican* (1965), Councillor Margaret Maytom (left), and Madame Z. Wisznicka-Kleczynska, curator of the Durban Art Gallery, at the opening of *Exhibition of Sculpture by Michael Zondi*, presented by the Durban Art Gallery, 26th August ó 13th September 1965. Photograph: Mercury.



Figures 279;280;281. *Cross-Bearing Christ*, mid 1970s.
Große Kreuzkirche, Hermannsburg, Germany. c.900mm (half-lifesize).
Photographs: Kirsten Nieser



Figure 282. *Calvary*, 1968. Linocut, 250x145. Collection: Tatham Art Gallery

Figure 283. *Getsemane* (sic.), 1968. Linocut, 250x143. Collection: Tatham Art Gallery



Figures 284;285;286. *Man after Bath*, 1963. Wild Olive. 320 x 140 x 155.
Photograph: Kirsten Nieser

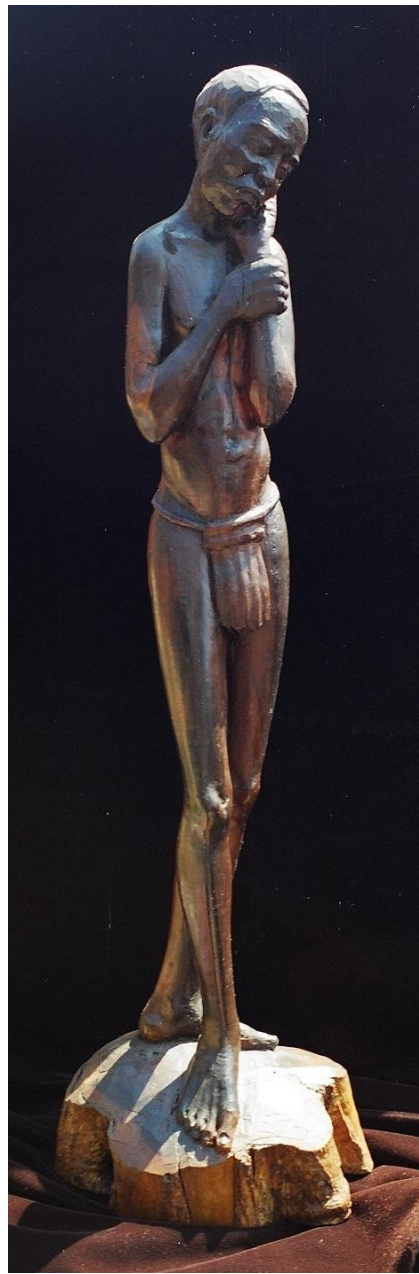


Figure 287. *The Found One* , late 1950s. Size unknown . Photograph: Heinrich Schlaudraff
Figure 288. *Realisation I*, 1960. Wild Olive, 620 x 140 x 170. Photograph: Kirsten Nieser

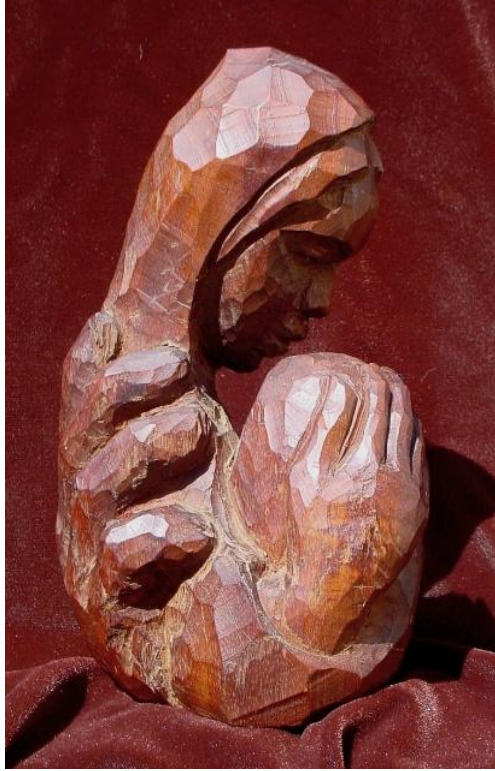


Figure 289. *The Daughter Speaks and the Father Listens*, 1983. Stinkwood. 380 x 165 x 130,
Digital Image: Kirsten Nieser

Figure 290. *God's Hand*, early 1980s. An indigenous Cape hardwood. 220 x 130 x 95.
Digital Image: Kirsten Nieser



Figure 291. *Father and Son*, 1975. Probably *umthombothi*. 240 x 130 x 140. Digital Image: Kirsten Nieser

Figure 292. *Eternal Bond* (or *Apple of My Eye* or *Family II*), An indigenous Cape hardwood. 1982. 270 x 100 x 110.
Digital Image: Kirsten Nieser

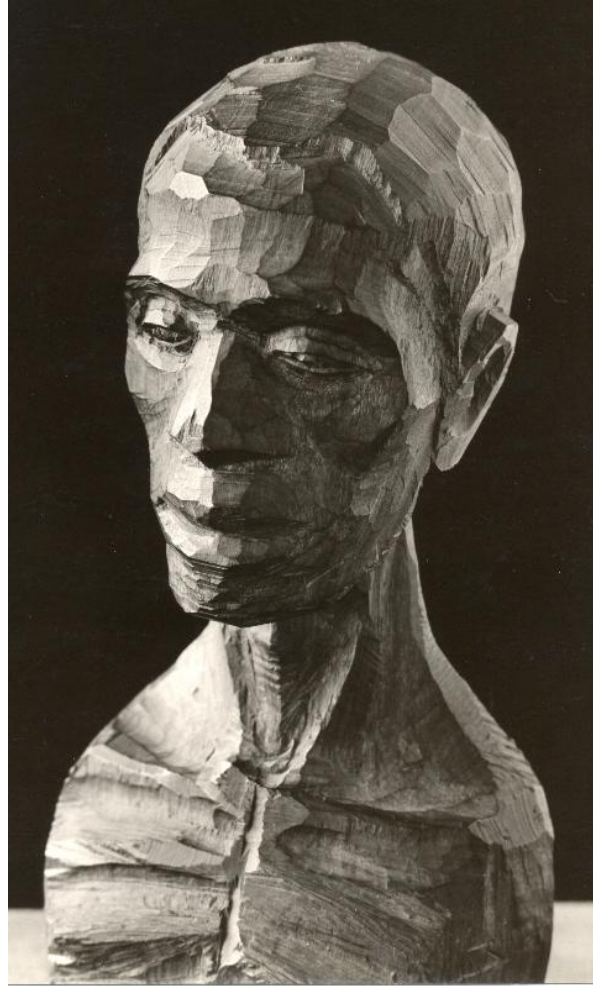


Figures 293;294. *Determination*, 1978. Possibly Red Ivory. 620 x 280 x 220. Digital Image: Kirsten Nieser



Figure 295. *Seated Young Man*, 1978. possibly Red Ivory. c. 400mm. Digital Image: Kirsten Nieser

Figure 296. *Realisation II (or Problems)*, 1979. East African Wood. 380 x 115 x 170. Digital Image: Kirsten Nieser



Figures 297. *Dying Young Man**, (or *Memento Mori* or *Sakubona Kufa*), 1960. umThombothi . 210 x 100 x 100.
Photograph: : Kirsten Nieser
Figure 298. *Dying Young Man**, 1960. Photograph: Heinrich Schlaudraff. Collection: Tatham Art Gallery



Figure 299. *Young Man (with Attitude)*, 1978. Stinkwood. 625 x 190 x 115. Digital Image: Kirsten Nieser

Figure 300. *Young Man with Stick*, 1980s. *umThombothi* . Size unknown. Photograph: Kirsten Nieser

Figure 301. *Smiling Boy*, 1980s. Indigenous Harwood. Size unknown. Photograph: Kirsten Nieser



Figure 302. *Famine*, 1965. Wood and size unknown. Photograph: Heinrich Schlaudraff

Figure 303. *Famine*, 1965. Photographer unknown: African Art Centre File: Killie Campbell Collections

Figure 304. *(Mother) Earth has taken him Back*, 1983. Wood and size unknown. Photograph: Sr. Johanna Senn



Figure 305. *Another Living Being*, mid-1980s. Wood and size unknown. Photograph: Sr. Johanna Senn

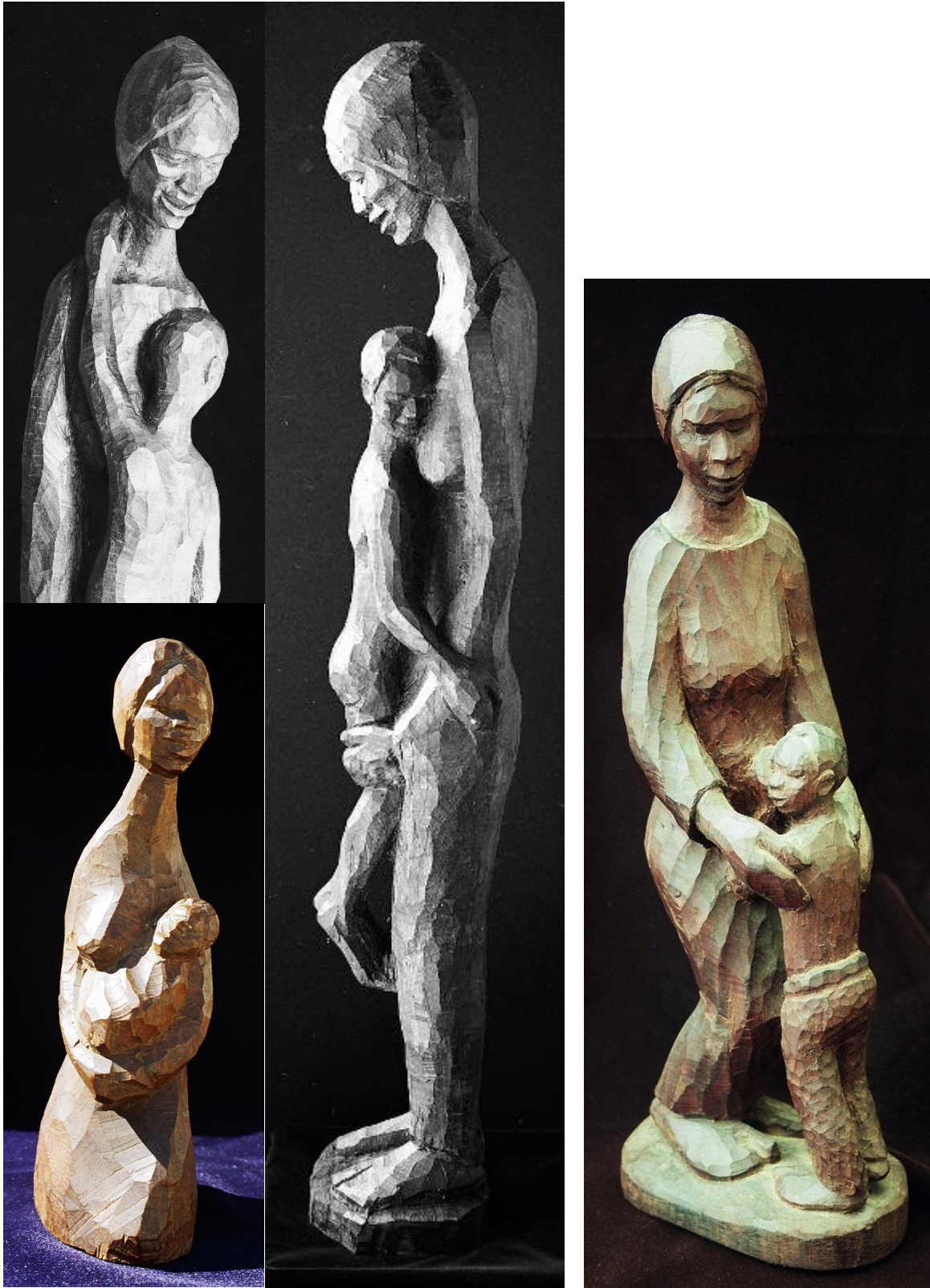
Figure 306. *Long Wait**, 1977. Karree. 470 x 180 x 220. Photograph: Kirsten Nieser



Figure 307. *Mother** (Zondi's Mother, Eva), 1967. Indigenous Hardwood. Photograph: Kirsten Nieser
Figure 308. *Portrait of Zondi's Mother**, 1970. *umThombothi*. 320 x 125 x 145. Digital Image



Figure 309. *Portrait of Zondi's Mother**, 1977. *Hardekool*. 280 x 120 x 140. Digital Image: Kirsten Nieser
Figure 310. *Portrait of Zondi's Mother**, 1977. *umThombothi*. 335 x 135 x 170. Photograph: Kirsten Nieser



Figures 311;312. *Madonna and Child*, mid-1960s. Wood and size unknown. Photograph: Heinrich Schlaudraff
Figure 313. *Mother and Child III*, mid-1960s. Indigenous Hardwood. c.300 Photograph: Kirsten Nieser
Figure 314. *Mother and Boy*, early-1970s. *umThombothi*. 420x105x125. Photograph: Prof. Johan van Wyk



Figure 315. *Tere Beskerming, (Tender Protection), 1974. Wild Olive. Size unknown. (c. 1000mm)*

Photograph: Dr. Trebot Barry

Figure 316;317;318. *Pieta, mid-1970s. Indigenous hardwood (Railway sleeper). 1160 x 260 x 240.*

Digital Images: Kirsten Nieser



Figures 319;320;321. *Lullaby**, mid-1980s. Red Ivory. c.600mm. Photographs: Kirsten Nieser

Figure 322. *Mother and Child II*, 1984. Indigenous Hardwood. Size unknown. Photograph: Kirsten Nieser



Figure 323. *Woman after Bath*, late 1950s. Possibly *umThombothi*. 400 x 85 x 80 (Base 300).

Photograph: Kirsten Nieser

Figure 324. *The Palm*, 1960. Wild Olive. 370 x 90 x 90. Photograph: Kirsten Nieser

Figures 325;326. *Kneeling Nude*, c. 1960. *umThombothi*. 160 x 60 x 70. Digital Image: Kirsten Nieser



Figure 327. *Spiral** (*Bathing Young Woman*), 1962. Lightweight wood. 475 x 95 x 115.

Photograph: Heinrich Schlaudraff

Figure 328. *Water Carrier*, 1965. Indigenous Hardwood. 720mm. Photograph: Kirsten Nieser

Figure 329. *Female Nude*, 1965. Probably *umThombothi*. 265 x 70 x 70. Photograph: Kirsten Nieser



Figures 330,331. *The Fountain*, 1963. Possibly *umThombothi*. 1244 x 300 x 210.
Photograph: Kirsten Nieser. Provenance: Durban Art Gallery.



Figure 332. *Nude with Necklace*, mid 1960s. Size and wood unknown. Photograph: Heinrich Schlaudraff.

Figure 333. *Bathing Woman*, mid 1960s. Size and wood unknown. Photograph: Heinrich Schlaudraff

Figure 334. *Female Nude*, 1966. Possibly Teak. C. 450mm. Photograph: Kirsten Nieser



Figure 335;336. *Woman after Bath*, late 1950s. Possibly *umThombothi*. 895 x 155 x 155. Photograph: Kirsten Nieser

Figure 337. *Female Nude*, mid-1970s. Wild Olive 670 x 100 x 130. Photograph: Kirsten Nieser

Figure 338. *Nadim Lo (As I Am)*, 1974. Mahogany. C. 800mm. Photograph: Johan van Wyk



Figure 339;340;341. *Vertwyfeling (Despair)*, 1974. *uMThombothi*. 750 x 110 x 160.
Digital Images and Photograph: Kirsten Nieser



Figure 342. *Female Nude*, 1989. Indigenous Hardwood.
320 x 200 x 220; Base 65. Photograph: Kirsten Nieser



Figure 343. *Graduate*, mid-1960s. Wood and size unknown. Photograph: Heinrich Schlaudraff
Figures 344;345. *The Scholar**, late-1970s. umThombothi. 790x140x140 (Base 80mm).
Digital Images: Kirsten Nieser

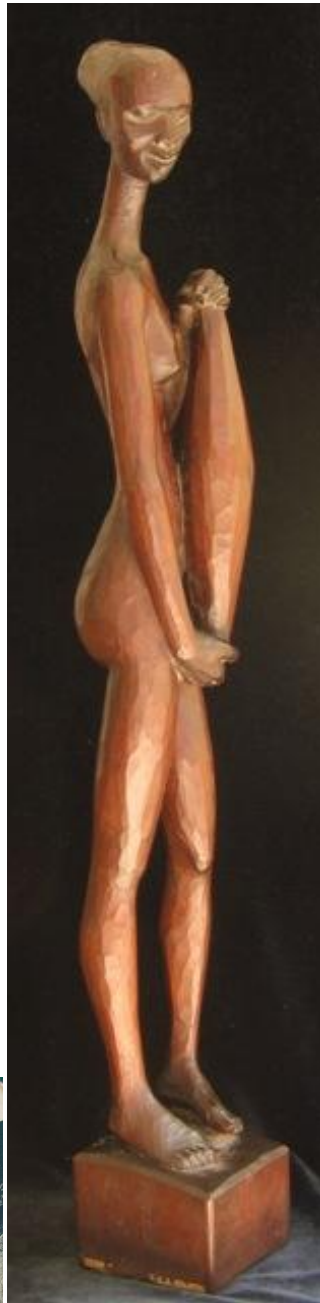
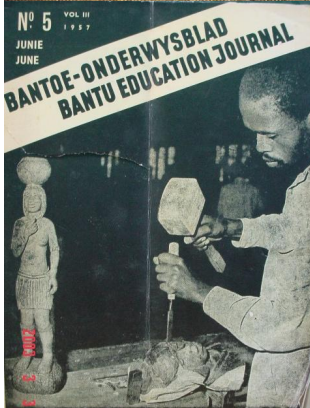
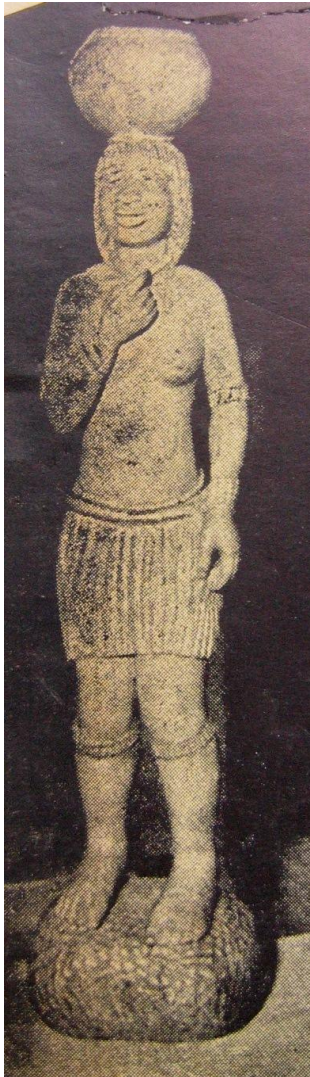


Figure 346. *Woman with Vessel*, 1957. Possibly Wild Olive. C 500mm.

Photograph: L.M. Pfeiffer in *Bantu Education Journal*

Figure 347. *Zondi Carving*, 1957 ó Front Cover of *Bantu Education Journal*, No. 5 Vol III June.

Figure 348. *Calabash*, 1963. Wild Olive 670 x 100 x 130. Photograph: Kirsten Nieser

Figure 349. *Calabash*, 1963. Wild Olive 670 x 100 x 130. Photograph: Heinrich Schlaudraff

Figure 350. *Base of Calabash*, 1966 sticker for *XXXII Biennale di Venezia*. Photograph: Kirsten Nieser



Figure 351. *Ntombazane**, 1970. Possibly *umThombothi*. 760 x 100 x 850. Photograph: Kirsten Nieser
Figure 352. *Bierpot*, 1974. Wild Olive. c. 650mm. Photograph: Johan van Wyk
Figure 353. *Baca Woman*, 1974. Afrormosia. c. 800mm. Photograph: Johan van Wyk

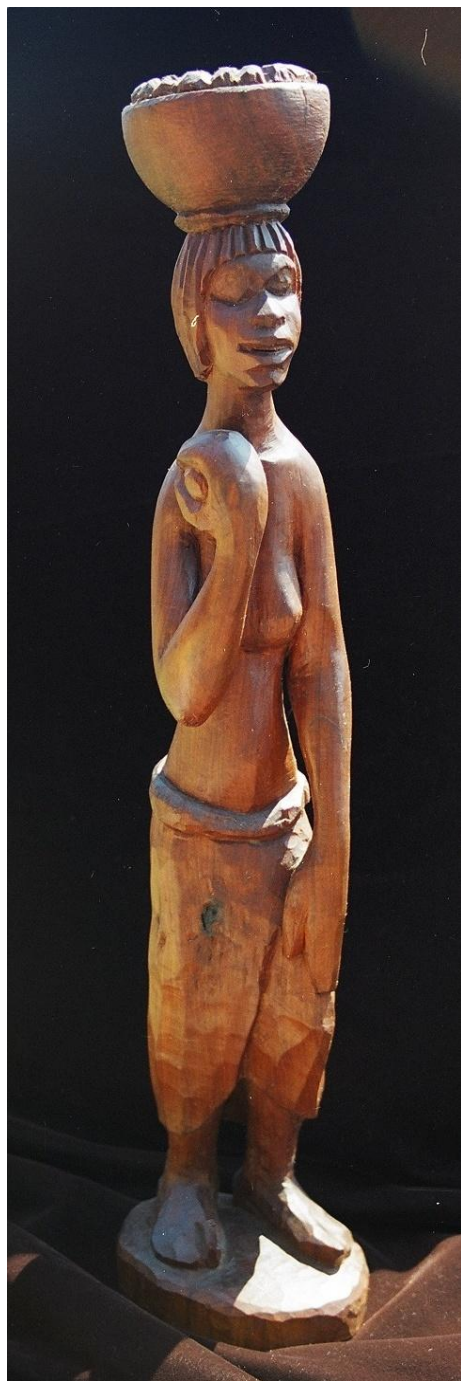


Figure 354. *Woman with Vessel*, 1978. Protea wood. c. 350mm. Photograph: Kirsten Nieser
Figure 355. *Sacred Harvest*, 1982. Igquba. 560 x 115 x 140. Photograph: Kirsten Nieser



Figure 356. *Orpheus*, 1972. *umThombothi*. 640 x 200 x 160. Collection: Tatham Art Gallery. Photograph: Kirsten Nieser



Figure 357. *Orpheus*, 1972. Exhibition of Sculptures, UNISA, 1974, Exhibit No. 31. Photograph: Trebot Barry



Figure 358. *Michael exhibits today*, Pretoria News, Friday November 1, 1974. Photographer: Pretoria News



Figure 359. *Michael Zondi and Punt Janson pictured with Orpheus*. 4 November 1974. Photographer: Beeld



Figure 360. *Zondi gets the recognition he deserves*, The Witness, Tuesday, March 23, 2004, p 8.



Figure 361. *Dancing Girl*, 1957. Wild Olive. 550 x 150 x 150. Photograph: Kirsten Nieser
Figures 362;363;364. *Pensive Dance*, 1976. Hardekool. 675 x 85 x 120. Digital Images: Kirsten Nieser
Collection: Tatham Art Gallery

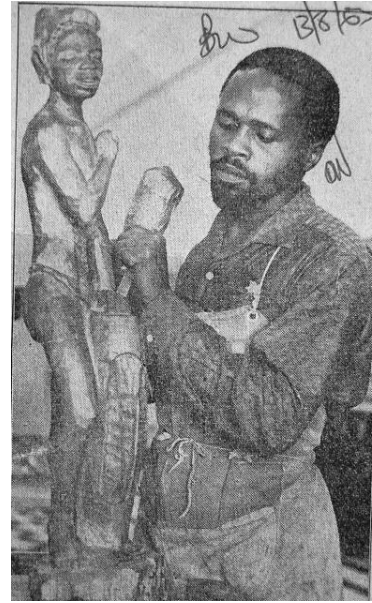


Figure 365. Jewellery Box, 1954. Insets ó camphor. 150 x 335 x 205. Photograph: Kirsten Nieser

Figure 366. *Musician (with umakhweyane)*, 1954. (Inset detail in Jewellery Box). Camphor wood. Photograph: Kirsten Nieser

Figure 367. *Drummer, (on Jewellery Box)*, 1954. c. 65mm. Photograph: Kirsten Nieser

Figure 368. *Rhythm*, 13 August 1965. Size unknown. Photograph: *Daily News*



Figure 369. *Drummer*, 1982. Indigenous hardwood. 395 x 115 x 180. Digital Image: Kirsten Nieser

Figure 370. *Drummer-Boy*, 1983. Wood unknown. 415x160x170. Digital Image: Kirsten Nieser

Figure 371. *Boy with Horn*, mid 1960s. Wood unknown, size unknown. Photograph: Heinrich Schlaudraff



Figure 372. *The Dreamer* (two versions), 1 March 1960. Ballpoint pen on paper. 130 and 140mm .
Digital Image: Kirsten Nieser

Figure 373. *Dreamer*, 23 May 1960. Pencil and ink on paper. 110mm. Digital Image: Kirsten Nieser



Figures 374;375. *Fluitspeler* (Flute Player), 1960. Cape Yellowwood.
1040 x 300 x 280; Base 320 x 250. Digital Images: Kirsten Nieser.
Collection: Oliewenhuis Art Gallery, Bloemfontein.



Figures 376;377. *Delantaba*, 1960. Indigenous Hardwood. 870 x 230 x 110. Digital Images: Kirsten Nieser
Figure 378. *Fugitive*, 23 May 1960. Ballpoint on paper sketch. Digital Image: Kirsten Nieser



Figure 379. *Concertina Player*, 1962. Lightweight wood. 505 x 110 x 90.

Photograph: Heinrich Schlaudraff

Figure 380. *Mine Worker** (or *Accordion player*), 1965. *umThombothi*. 600 x 95 x 210 + base 50

Digital Image: Kirsten Nieser . Killie Campbell Collection, Durban

Figure 381. *Wema Blues*, 1970. Camphor. 410 x 130 x 140. Digital Image: Kirsten Nieser.

Collection: Tatham Art Gallery



Figure 382. *Umshayele (The Musician)*, 1969. *umThombothi* 460 x 90 x 100. Photograph: Kirsten Nieser.

Figure 383. *Concertina Player*, 1980s. *umThombothi* . 400 x 90 x 105. Photograph: Dr. Trebot Barry

Figure 384. *Boy with Concertina*, 1988. Indigenous hardwood. 650 x 100 x 150. Photograph: Kirsten Nieser



Figure 385. *Infiliji – The Musician (Mouth Organ)*, 1969. *umThombothi*. 435 x 125 x 155. Photograph: Kirsten Nieser

Figure 386. *The Whistler*, 1970. Kiaat. 490 x 130 x 120. Photograph: Kirsten Nieser



Figure 387. *Guitar Player*, 1965. *umThombothi*. 350 x 130 x 75. Photograph: Kirsten Nieser.

Figure 388. *Cello Player*, 1968. Indigenous hardwood. 525 x 125 x 110. Photograph: Kirsten Nieser

Figure 389. *Cello Player*, 1974. *umThombothi*. 470x185x127. Photograph: Kirsten Nieser
Collection: Tatham Art Gallery



Figure 390. *Boy with Harp*, 1980. *Igquba*. 430 x 85 x 130. Digital Image: Kirsten Nieser. Collection: Tatham Art G

Figure 391. *Eroica (Beethoven)*, 1960. Indigenous hardwood. 360 x 160 x 170. Photograph: Kirsten Nieser